

Site Plan







List of Amenities

- 1 Arrival
- 2 Carpark
- 3 Swimming Pool
- 4 Children's Pool
- 5 Jacuzzi
- 6 Pool Deck
- 7 Lounge
- 8 BBQ Pit
- 9 Gym / Restroom
- 10 Children's Playground
- 11 Bicycle Parking
- 12 Pedestrian Side Gate / Covered Walkway
- 13 Bin

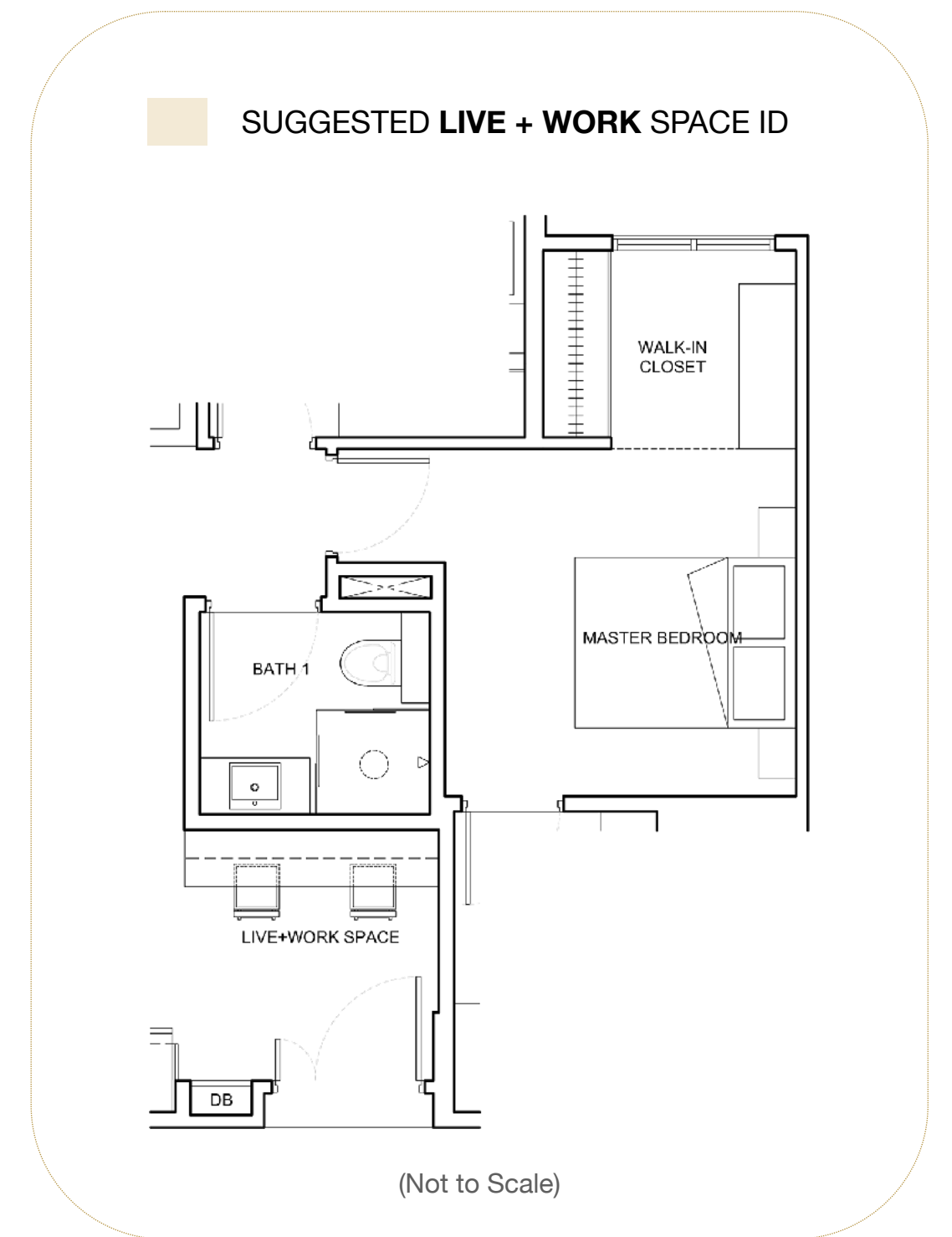
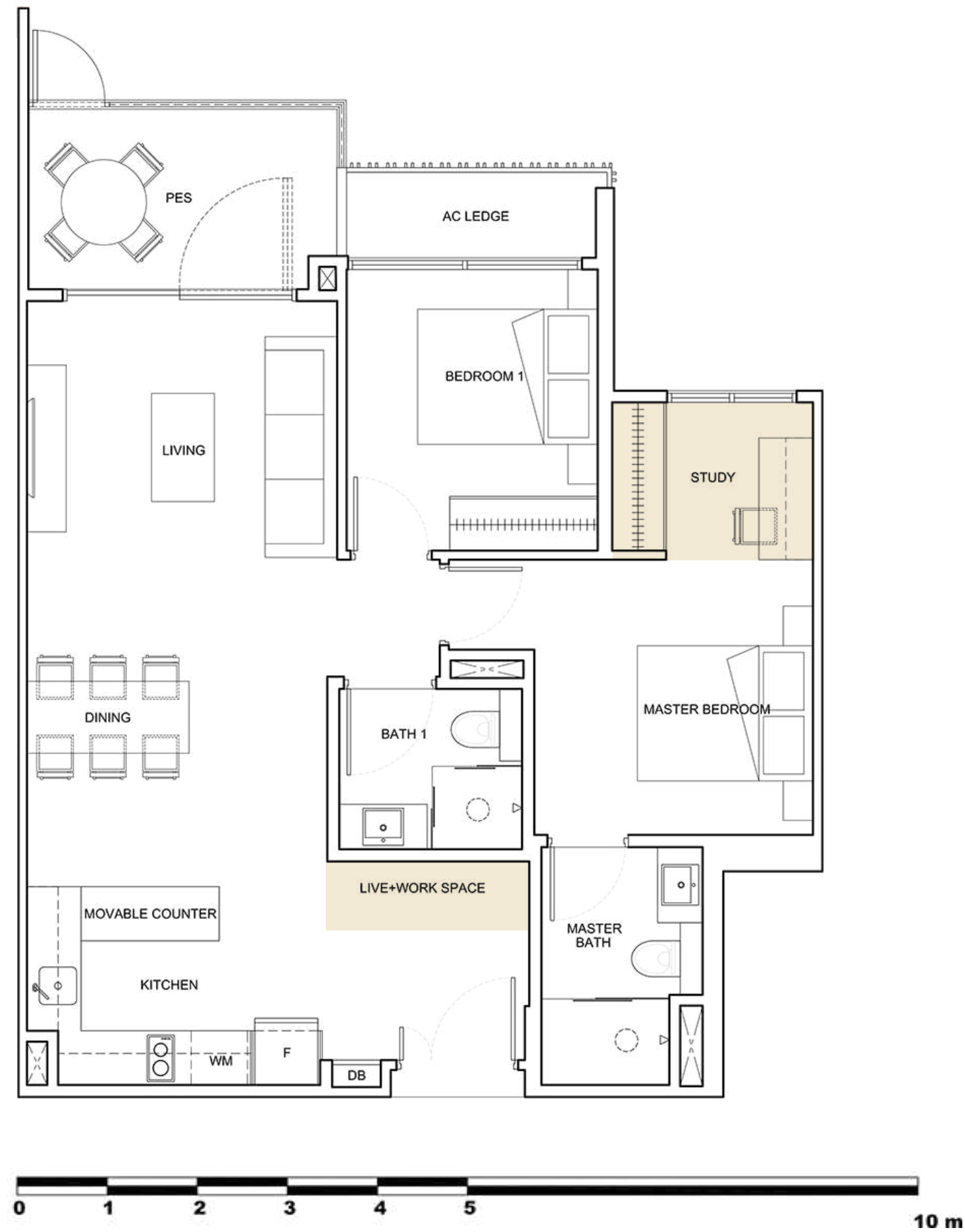
Rymden | 77

Level /Unit	1	2	3	4
5th	B1-h	A2-h	A3-h	B4-h
4th	B1	A2	A3	B4
3rd	B1	A2	A3	B4
2nd	B1	A2	A3	B4
1st		A2-p	A3-p	B4-p

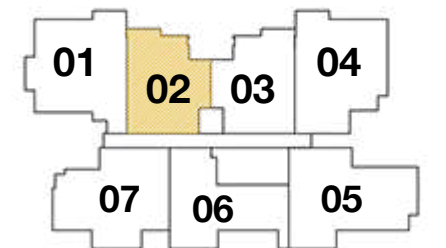
Diagrammatic Chart - Legend

-  2 Bedroom
-  3 Bedroom
-  4 Bedroom
-  Penthouse

7	6	5	Level /Unit
D7-PH	B6	D5-PH	5th
C7	B6	D5	4th
C7a	B6	D5	3rd
C7	B6	D5	2nd
			1st



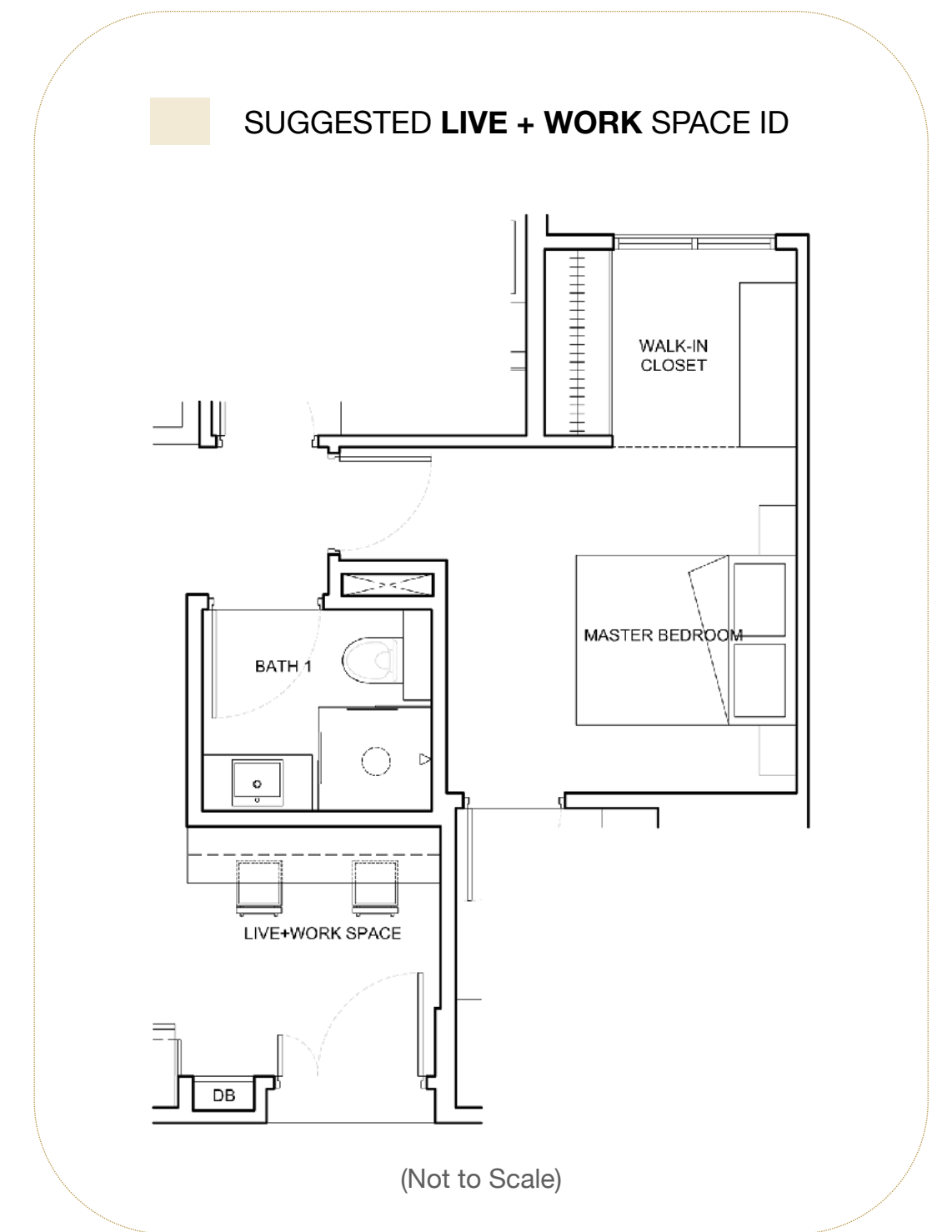
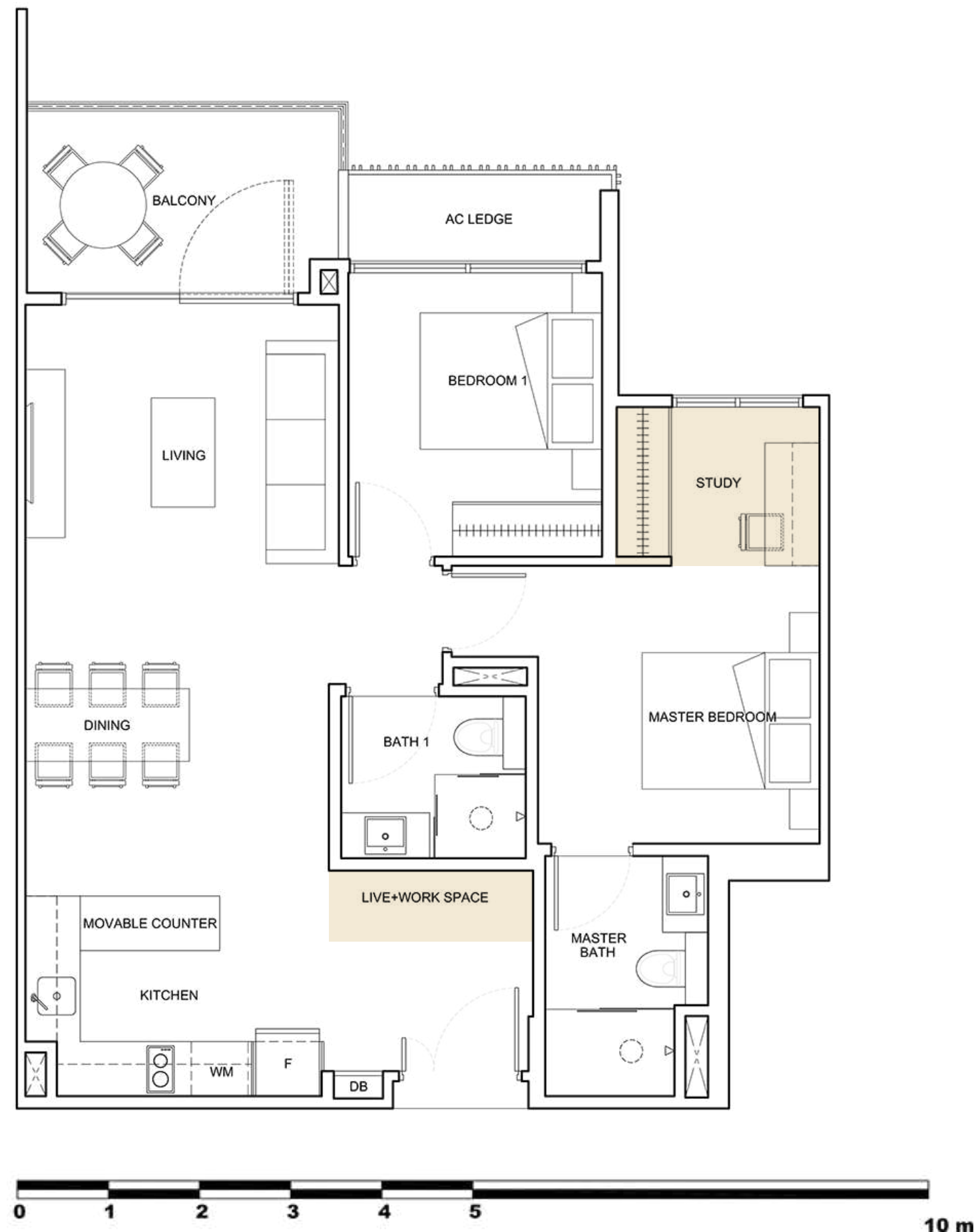
The plans are subject to amendments as may be required or approved by the relevant authorities. Floor areas are estimates only and subject to final survey. Plans are not drawn to scale and do not form part of the contract. The balcony shall not be enclosed unless with the approved balcony screen. The approved balcony screen will be installed at buyer's own cost should the buyer intend to have balcony enclosure.



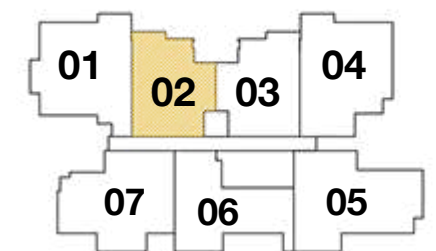
Type A2

2 Bedroom + Study

84 sqm - #02-02, #03-02, #04-02

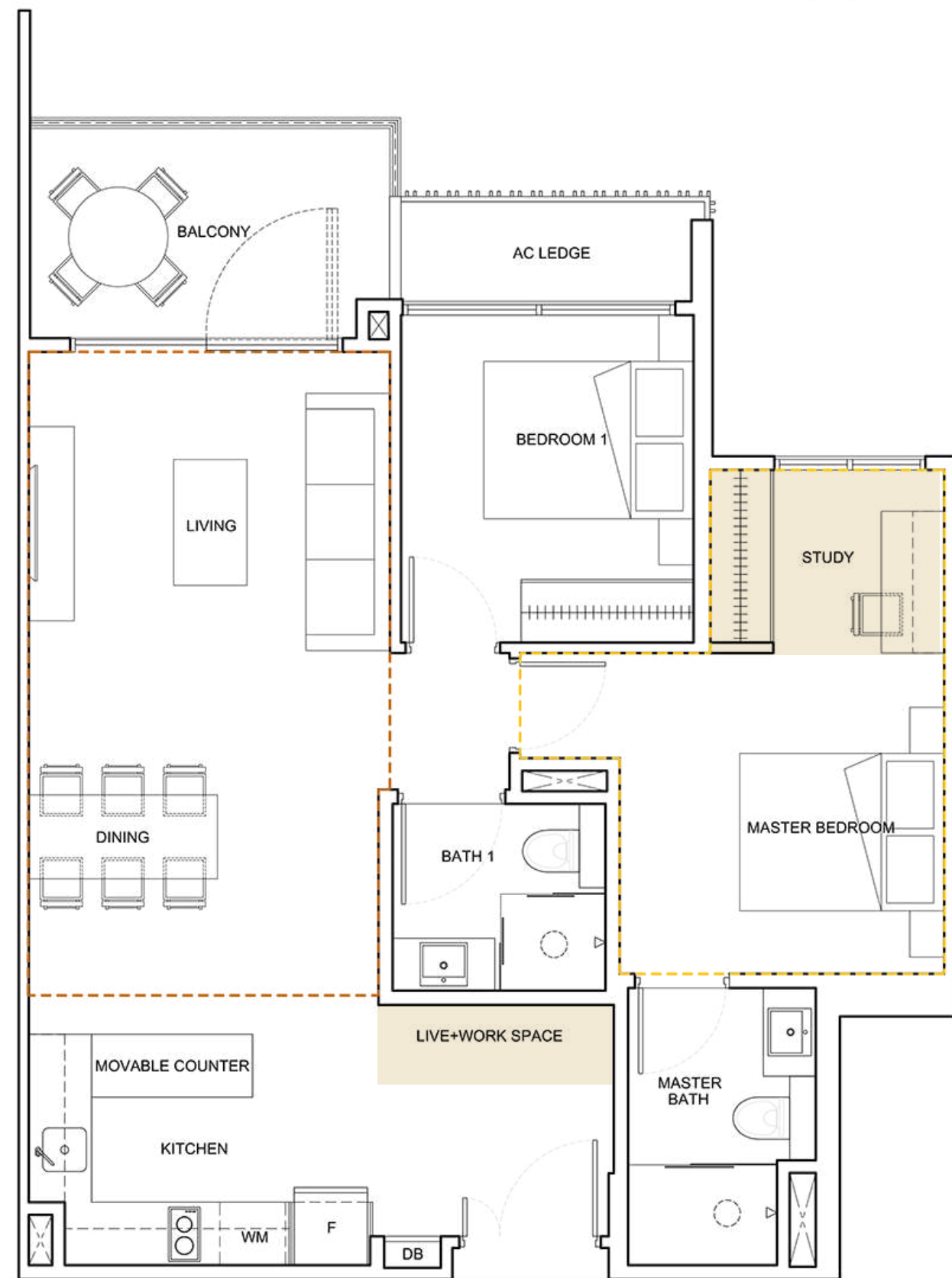


The plans are subject to amendments as may be required or approved by the relevant authorities. Floor areas are estimates only and subject to final survey. Plans are not drawn to scale and do not form part of the contract. The balcony shall not be enclosed unless with the approved balcony screen. The approved balcony screen will be installed at buyer's own cost should the buyer intend to have balcony enclosure.

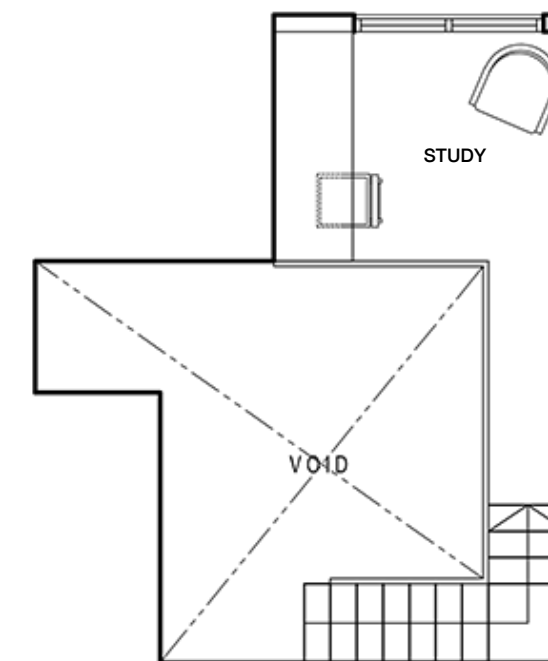


--- STRATA AREA IS INCLUSIVE OF STRATA VOID AREA ABOVE MASTER BEDROOM AS PER DASHED LINE

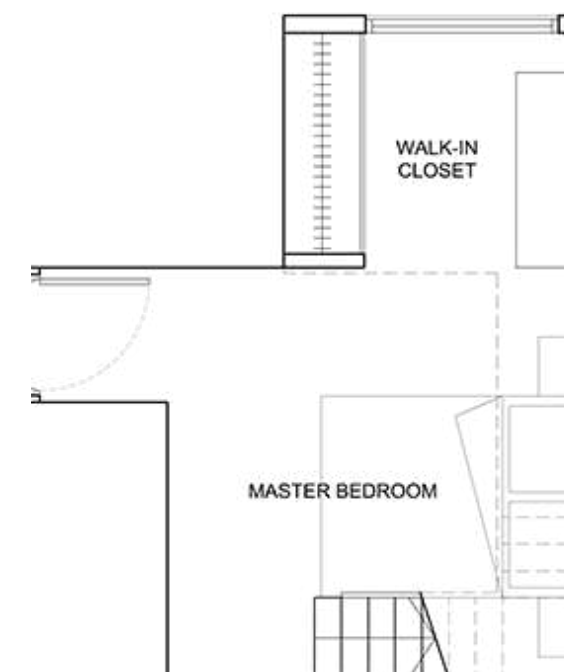
--- STRATA AREA IS INCLUSIVE OF STRATA VOID AREA ABOVE LIVING & DINING AREA AS PER DASHED LINE



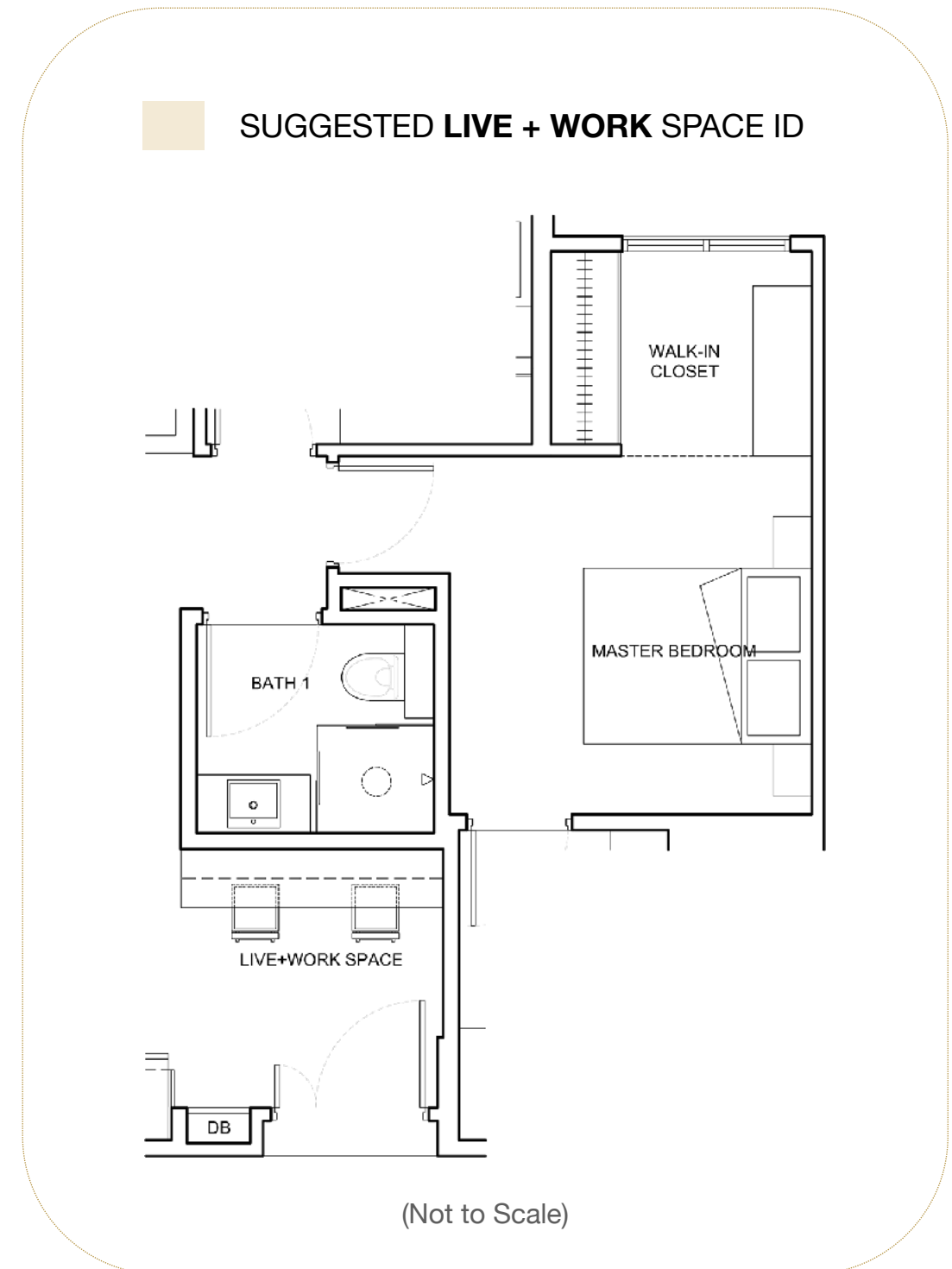
SUGGESTED FURNITURE DECK AT LOFT



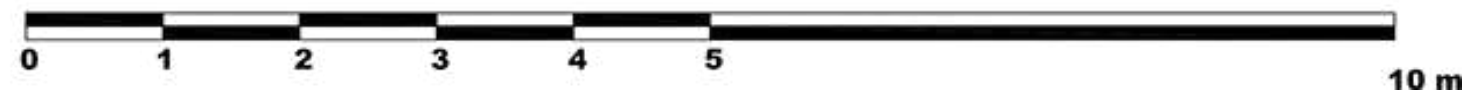
MASTER BEDROOM (LOFT)



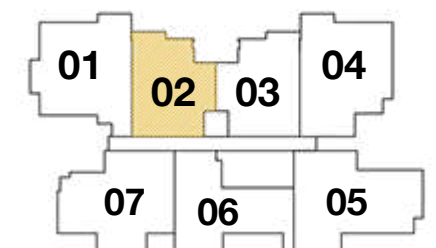
SUGGESTED LIVE + WORK SPACE ID

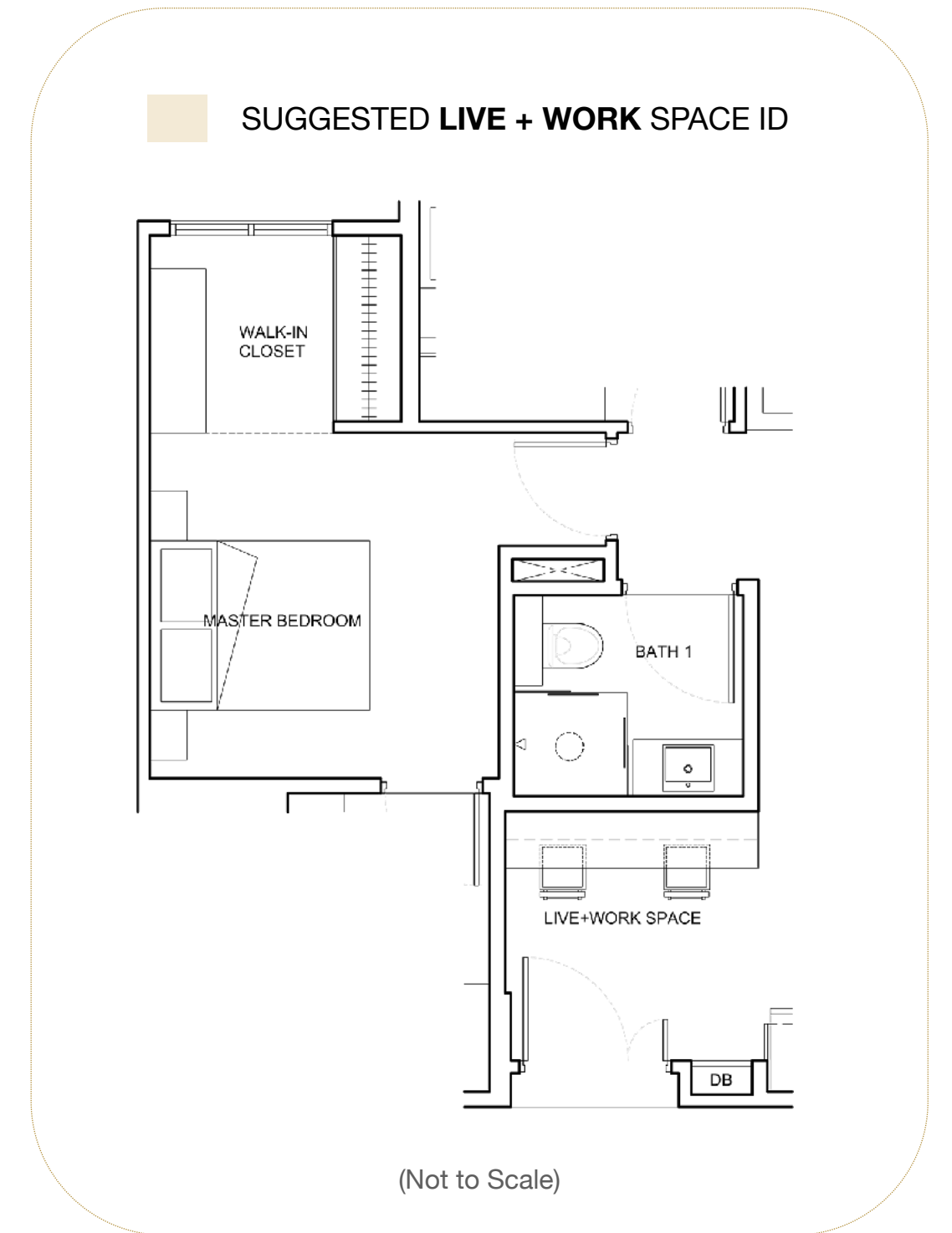
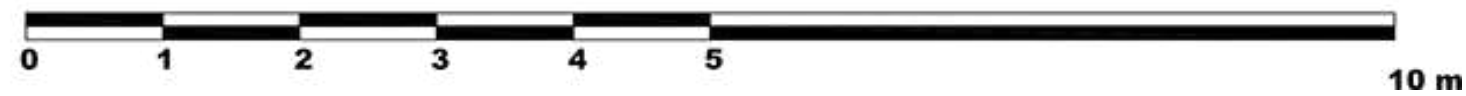
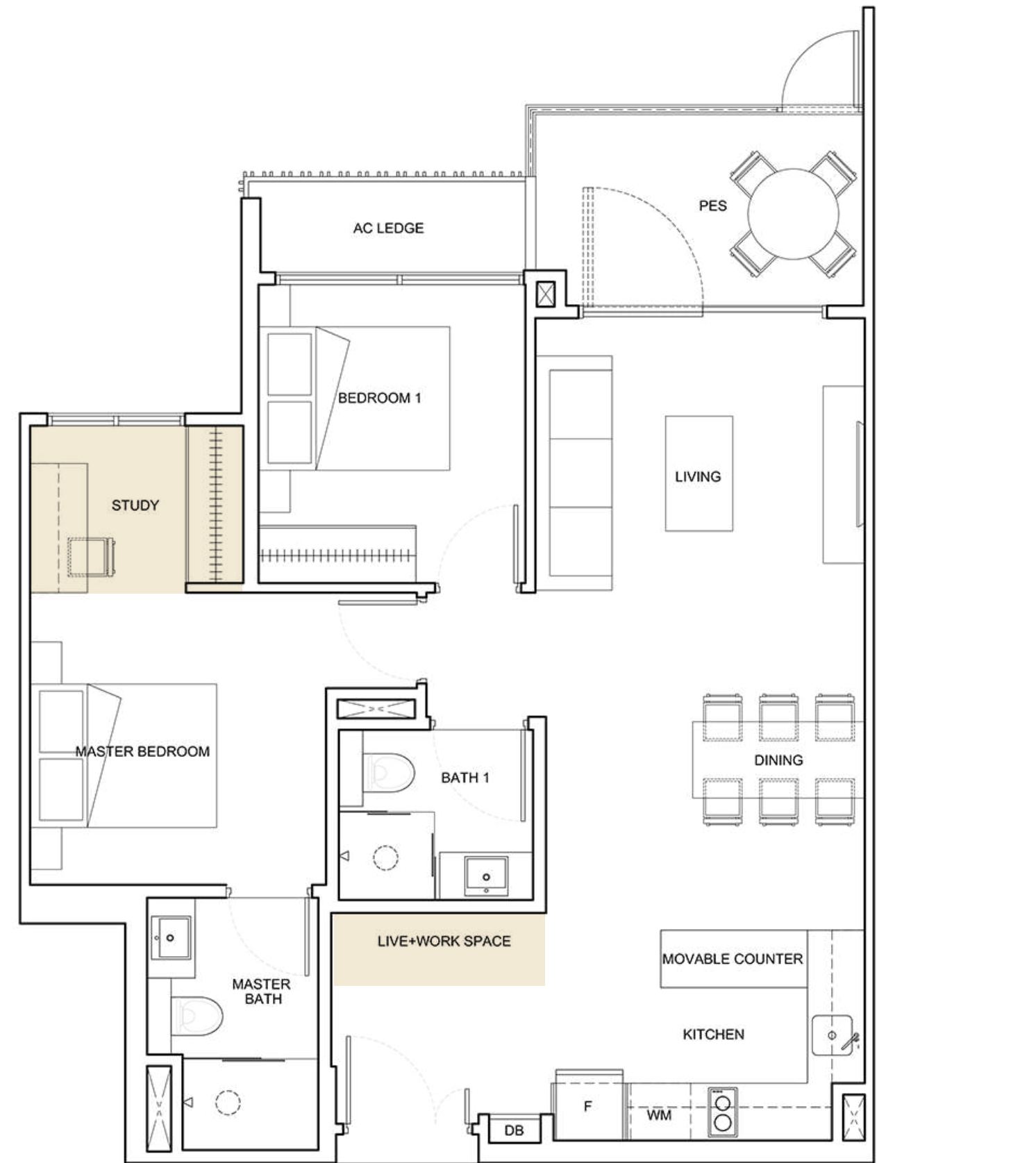


(Not to Scale)

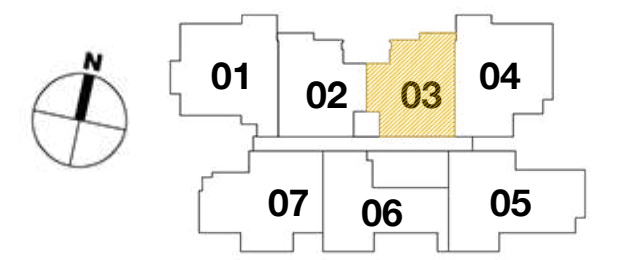


The plans are subject to amendments as may be required or approved by the relevant authorities. Floor areas are estimates only and subject to final survey. Plans are not drawn to scale and do not form part of the contract. The balcony shall not be enclosed unless with the approved balcony screen. The approved balcony screen will be installed at buyer's own cost should the buyer intend to have balcony enclosure.





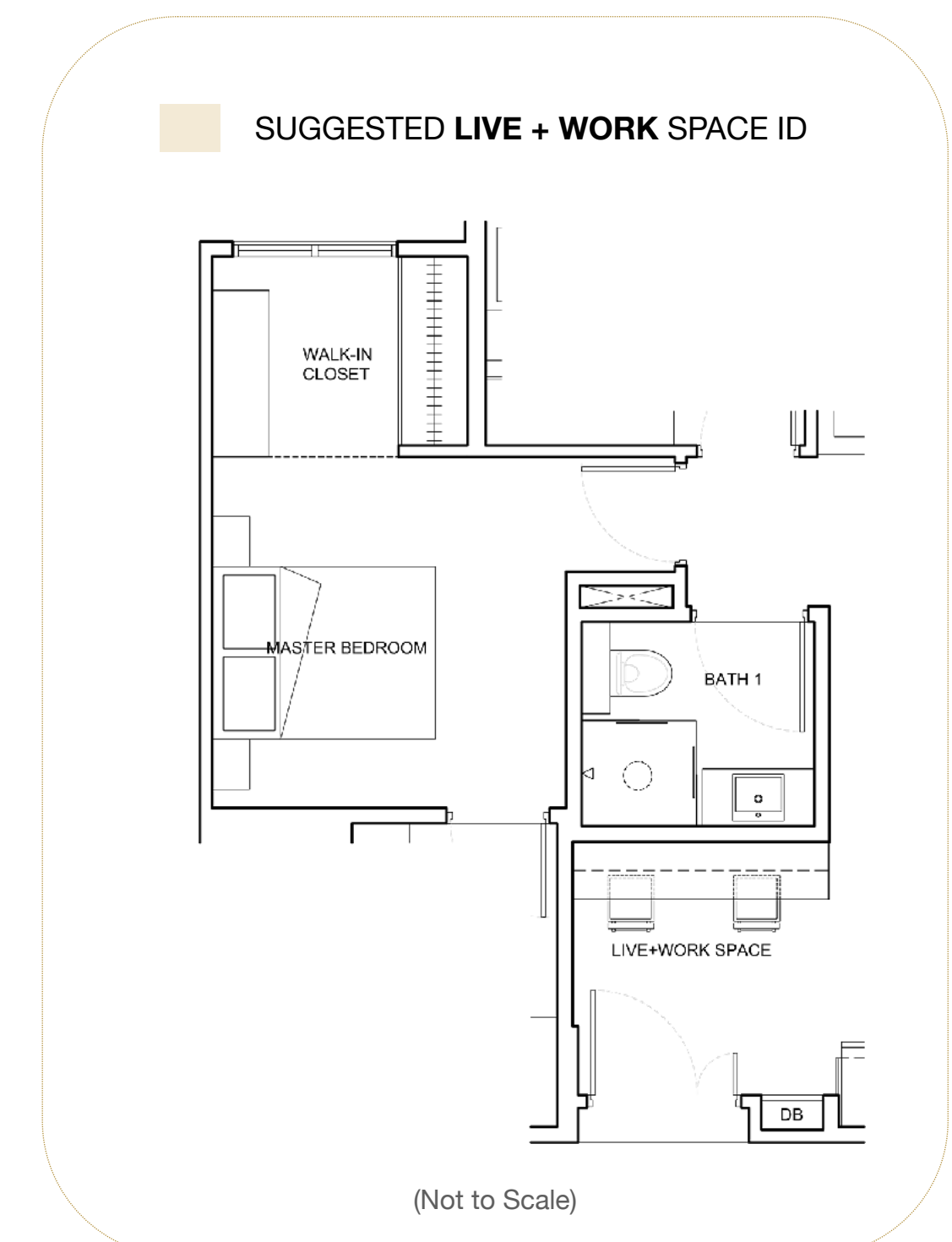
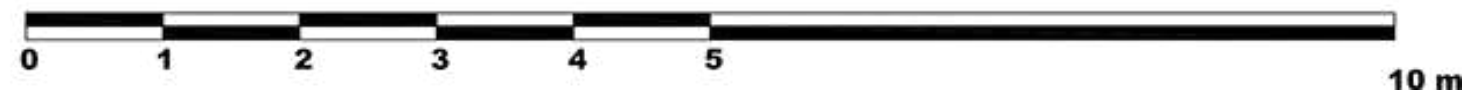
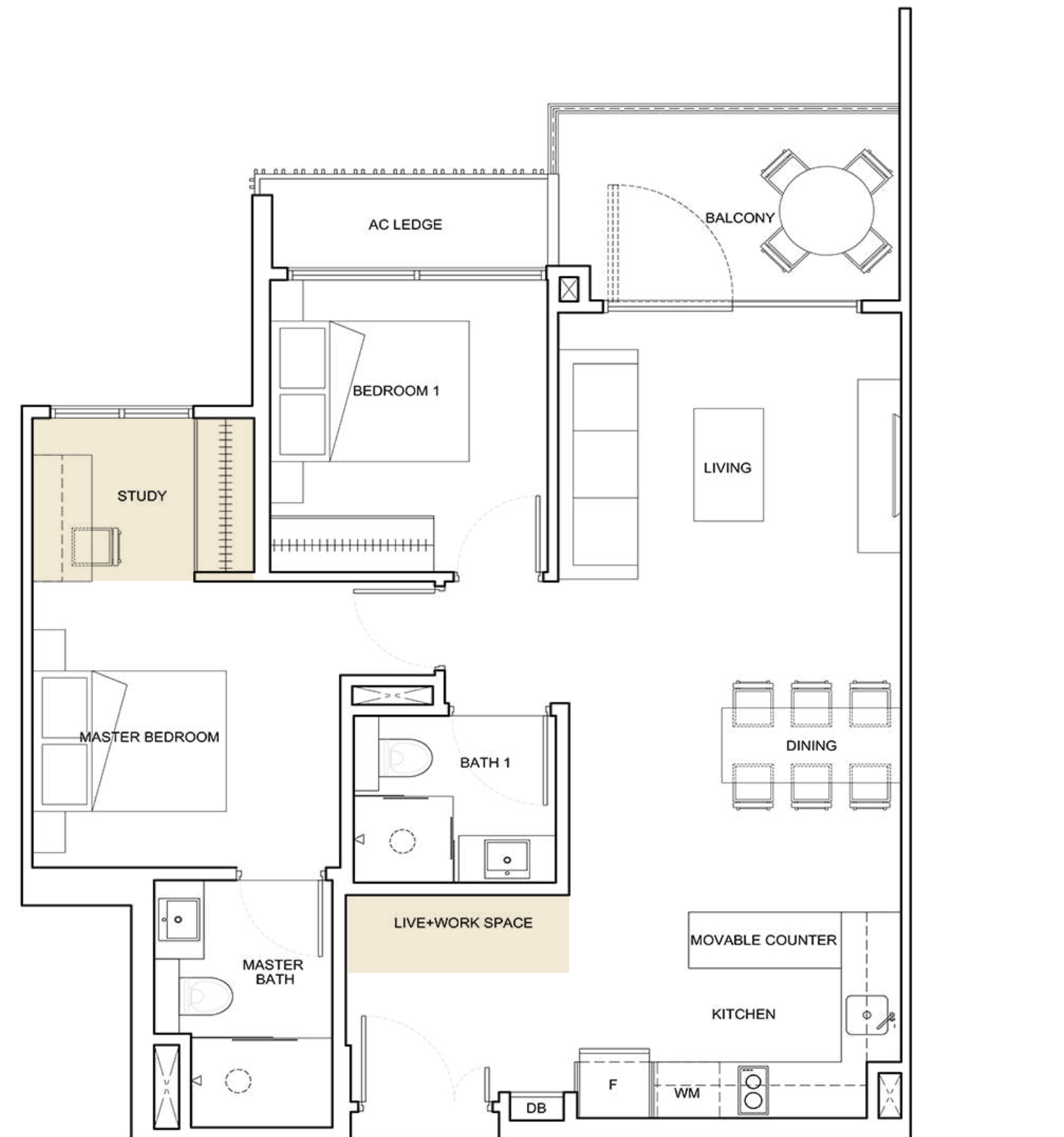
The plans are subject to amendments as may be required or approved by the relevant authorities. Floor areas are estimates only and subject to final survey. Plans are not drawn to scale and do not form part of the contract. The balcony shall not be enclosed unless with the approved balcony screen. The approved balcony screen will be installed at buyer's own cost should the buyer intend to have balcony enclosure.



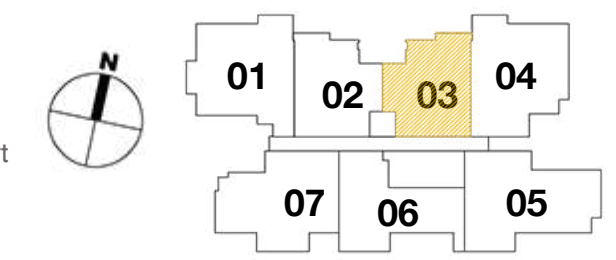
Type A3

2 Bedroom + Study

84 sqm - #02-03, #03-03, #04-03

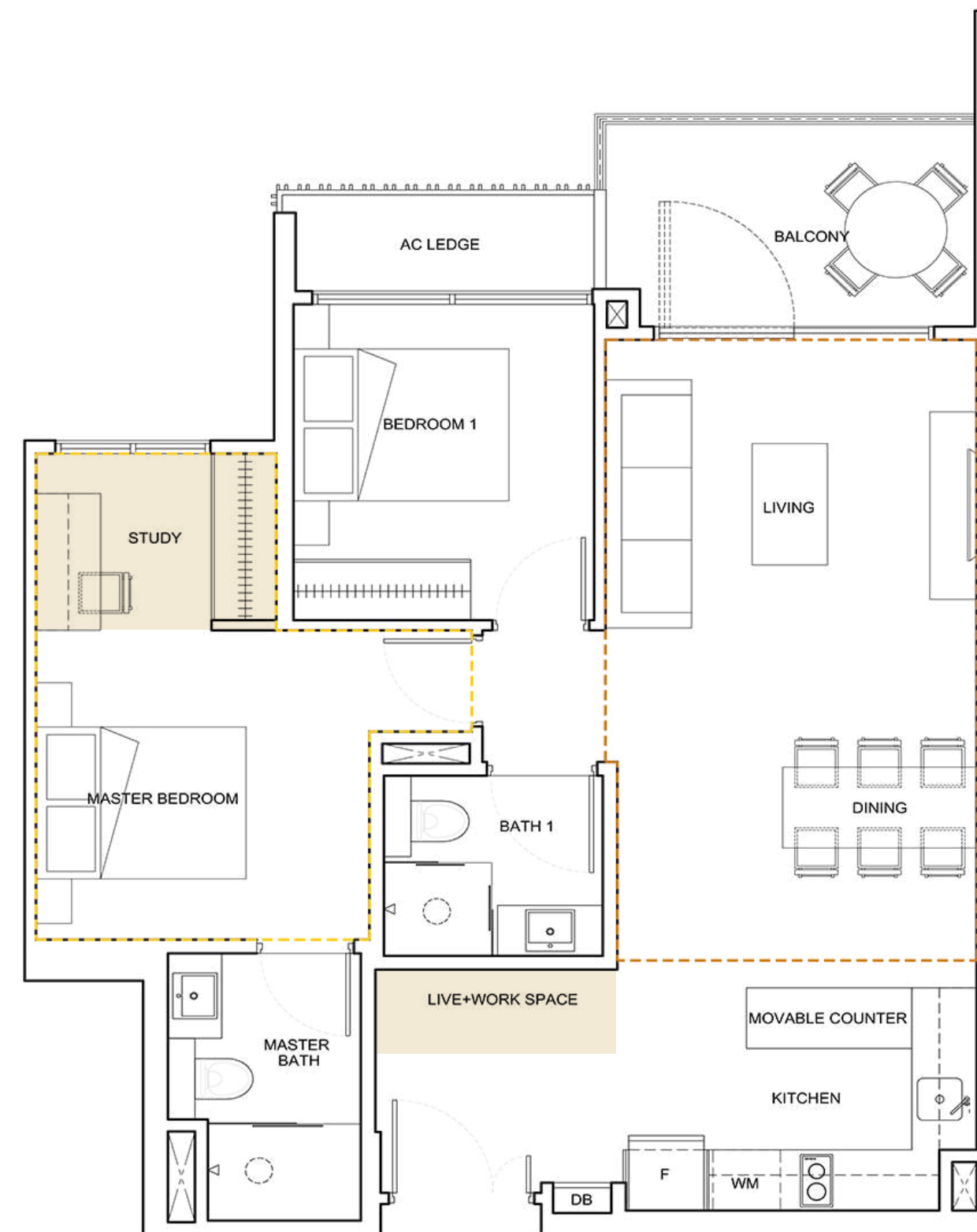


The plans are subject to amendments as may be required or approved by the relevant authorities. Floor areas are estimates only and subject to final survey. Plans are not drawn to scale and do not form part of the contract. The balcony shall not be enclosed unless with the approved balcony screen. The approved balcony screen will be installed at buyer's own cost should the buyer intend to have balcony enclosure.

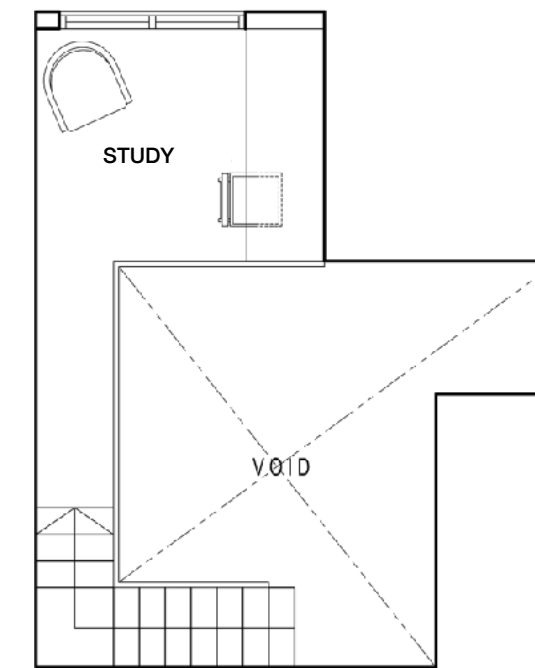


----- STRATA AREA IS INCLUSIVE OF STRATA VOID AREA ABOVE MASTER BEDROOM AS PER DASHED LINE

----- STRATA AREA IS INCLUSIVE OF STRATA VOID AREA ABOVE LIVING & DINING AREA AS PER DASHED LINE



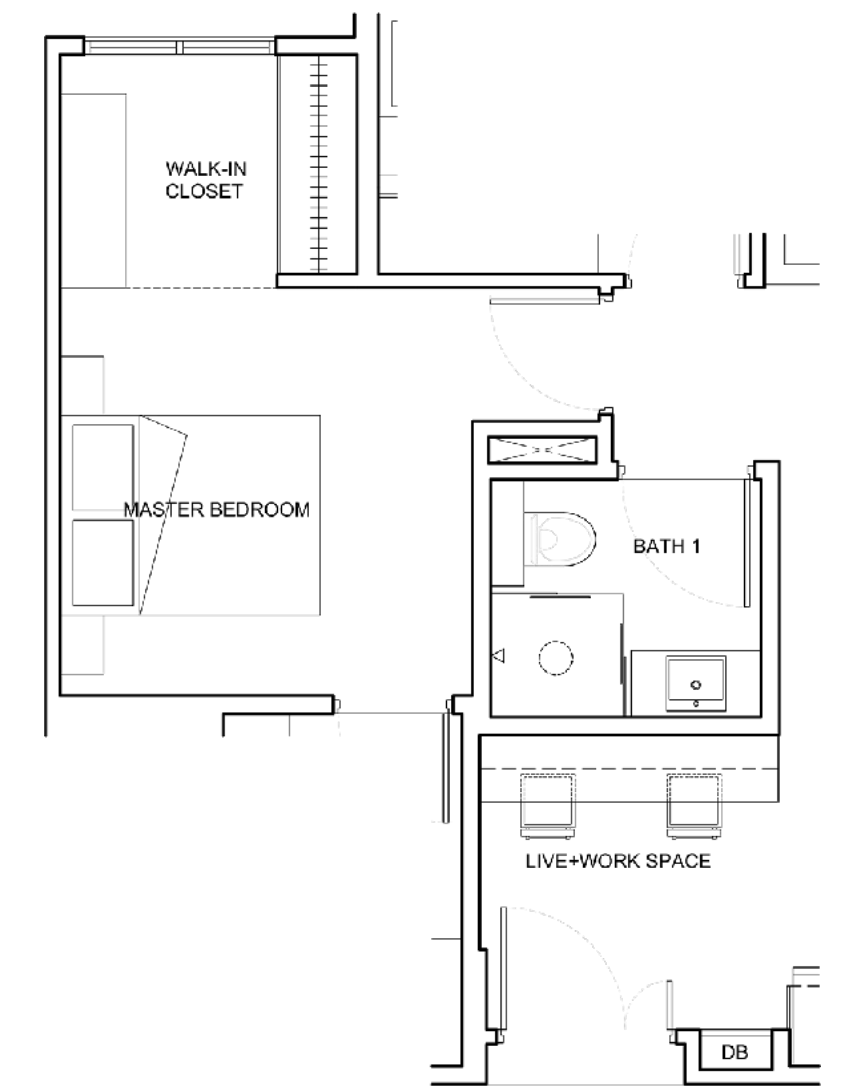
SUGGESTED FURNITURE DECK AT LOFT



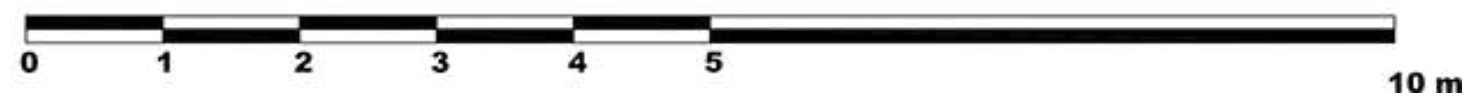
MASTER BEDROOM (LOFT)



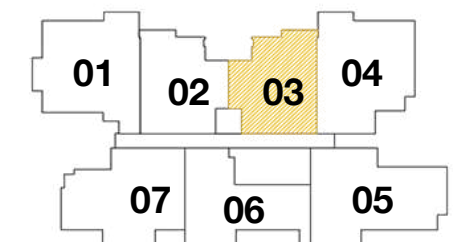
SUGGESTED LIVE + WORK SPACE ID



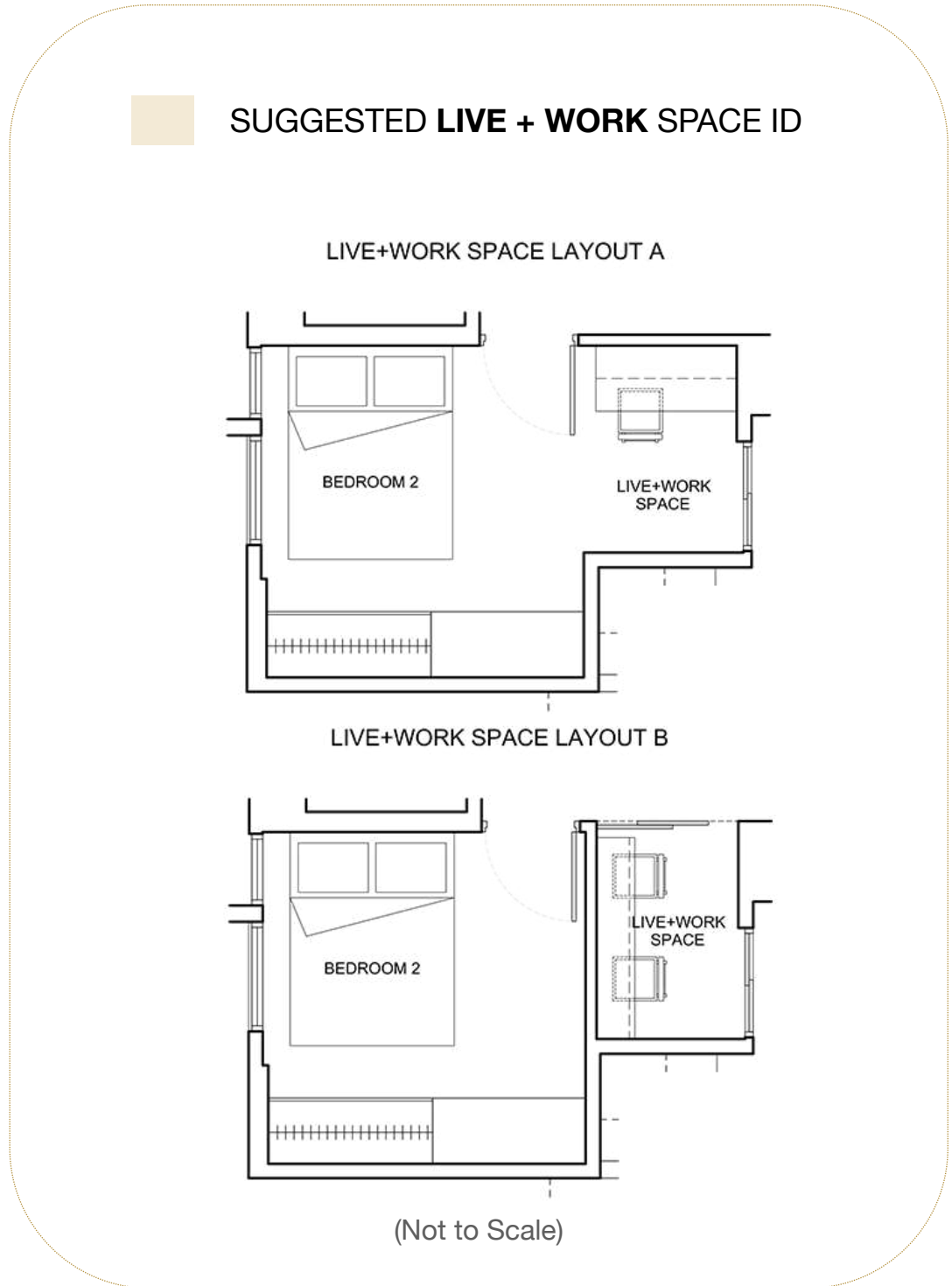
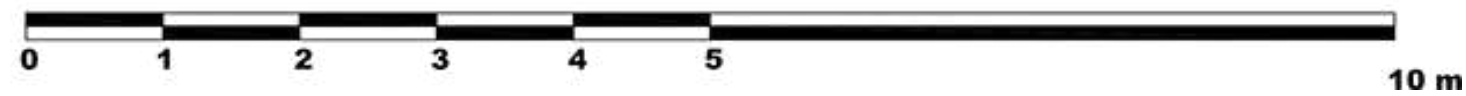
(Not to Scale)



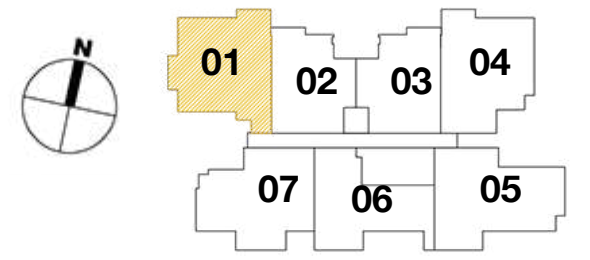
The plans are subject to amendments as may be required or approved by the relevant authorities. Floor areas are estimates only and subject to final survey. Plans are not drawn to scale and do not form part of the contract. The balcony shall not be enclosed unless with the approved balcony screen. The approved balcony screen will be installed at buyer's own cost should the buyer intend to have balcony enclosure.



Type B1
3 Bedroom + Utility
 105 sqm - #02-01, #03-01, #04-01



The plans are subject to amendments as may be required or approved by the relevant authorities. Floor areas are estimates only and subject to final survey. Plans are not drawn to scale and do not form part of the contract. The balcony shall not be enclosed unless with the approved balcony screen. The approved balcony screen will be installed at buyer's own cost should the buyer intend to have balcony enclosure.



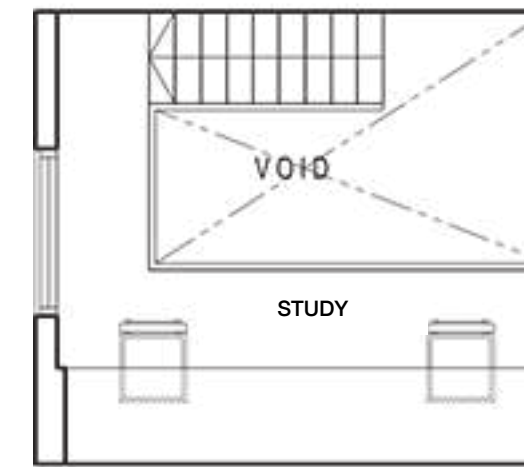
Type B1-h
3 Bedroom + Utility
 132 sqm - #05-01

--- STRATA AREA IS INCLUSIVE OF STRATA VOID AREA ABOVE MASTER BEDROOM AS PER DASHED LINE

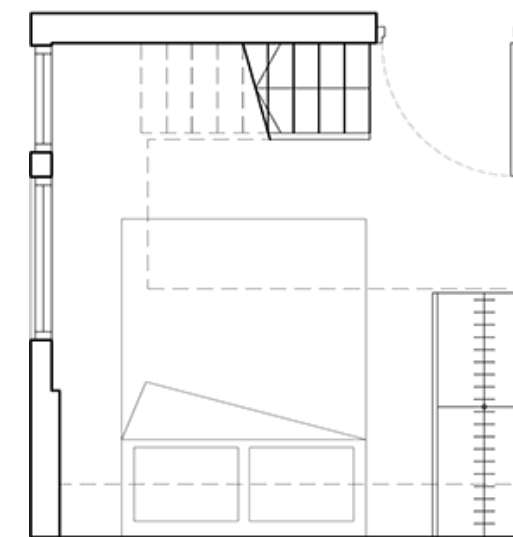
--- STRATA AREA IS INCLUSIVE OF STRATA VOID AREA ABOVE LIVING & DINING AREA AS PER DASHED LINE



SUGGESTED FURNITURE DECK AT LOFT

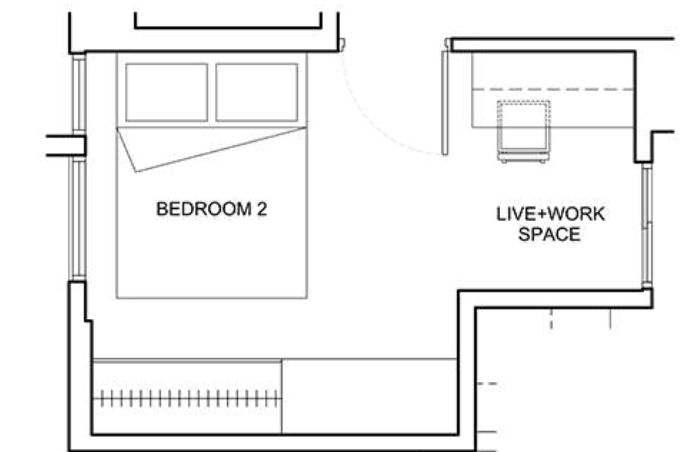


LOFT AT BEDROOM 2

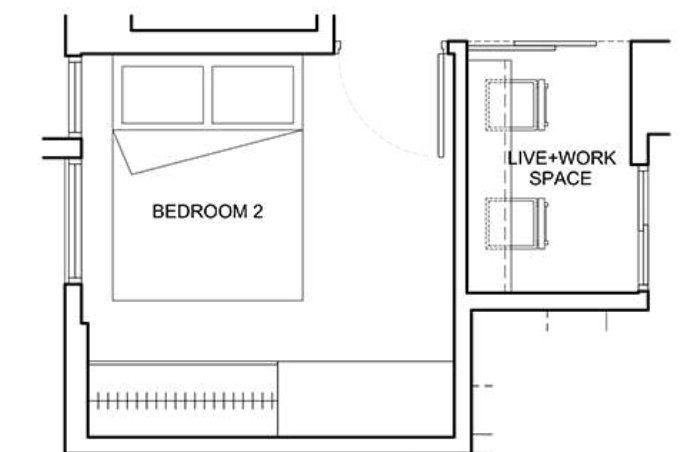


SUGGESTED **LIVE + WORK SPACE ID**

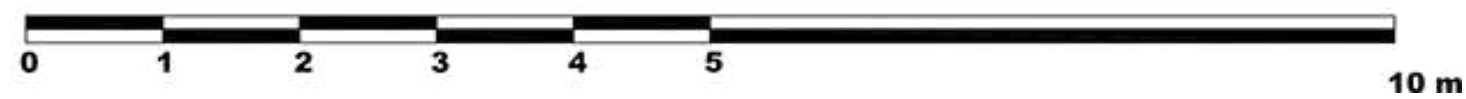
LIVE+WORK SPACE LAYOUT A



LIVE+WORK SPACE LAYOUT B

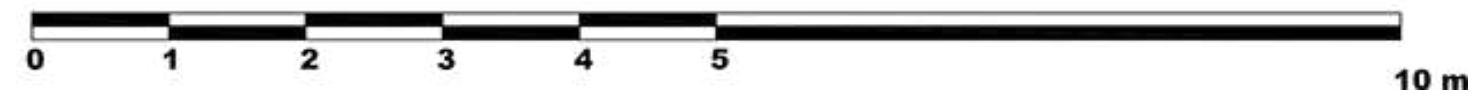
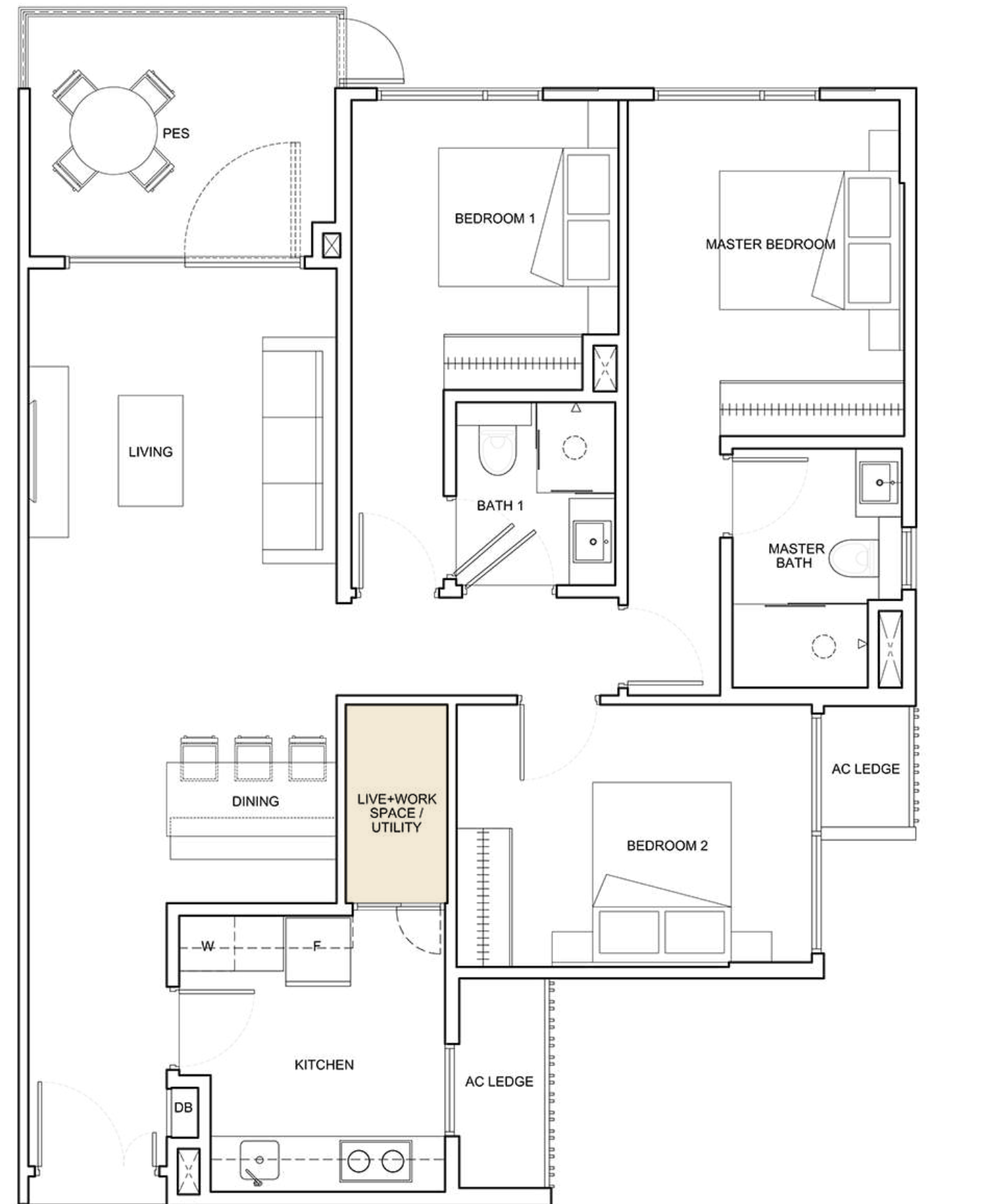


(Not to Scale)



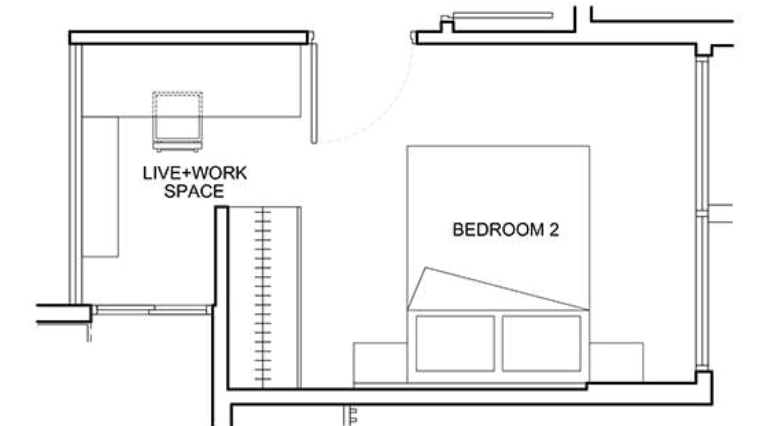
The plans are subject to amendments as may be required or approved by the relevant authorities. Floor areas are estimates only and subject to final survey. Plans are not drawn to scale and do not form part of the contract. The balcony shall not be enclosed unless with the approved balcony screen. The approved balcony screen will be installed at buyer's own cost should the buyer intend to have balcony enclosure.



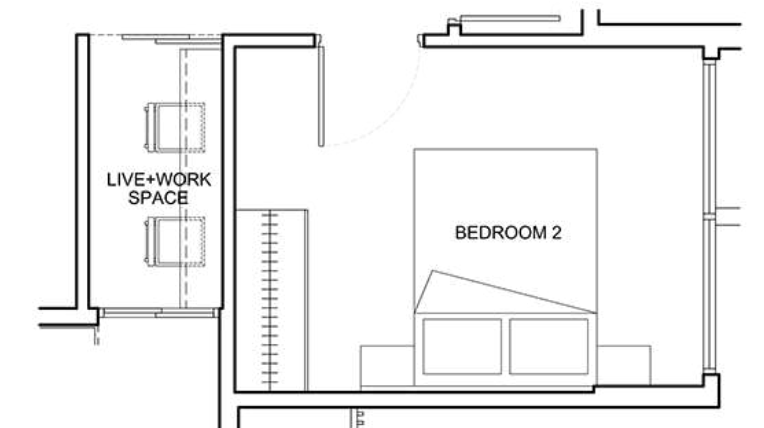


SUGGESTED LIVE + WORK SPACE ID

LIVE+WORK SPACE LAYOUT A

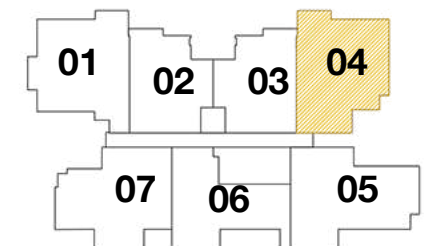


LIVE+WORK SPACE LAYOUT B

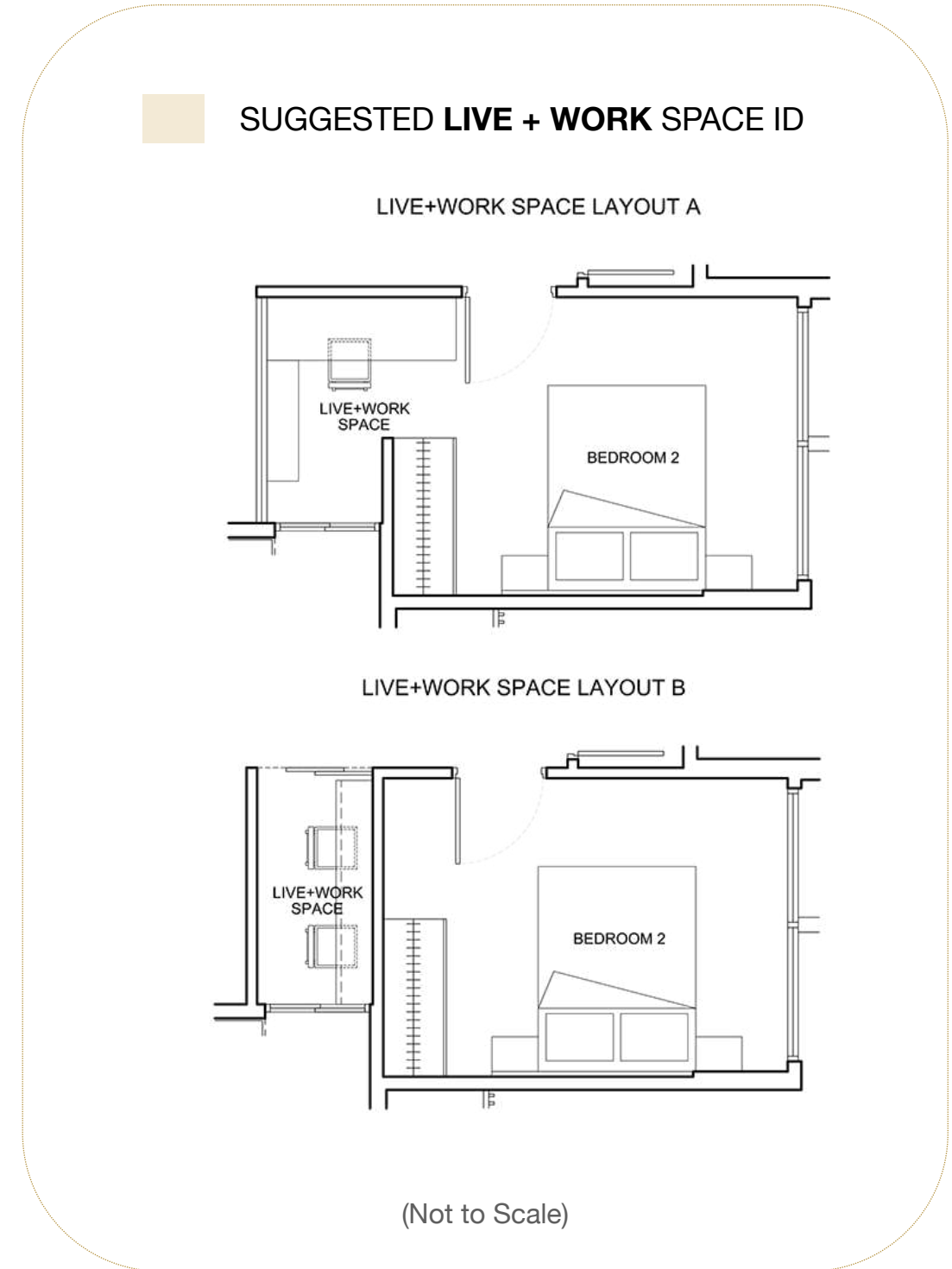
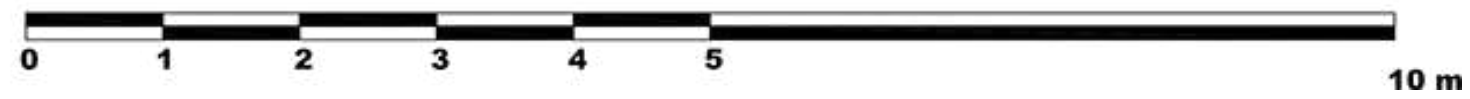
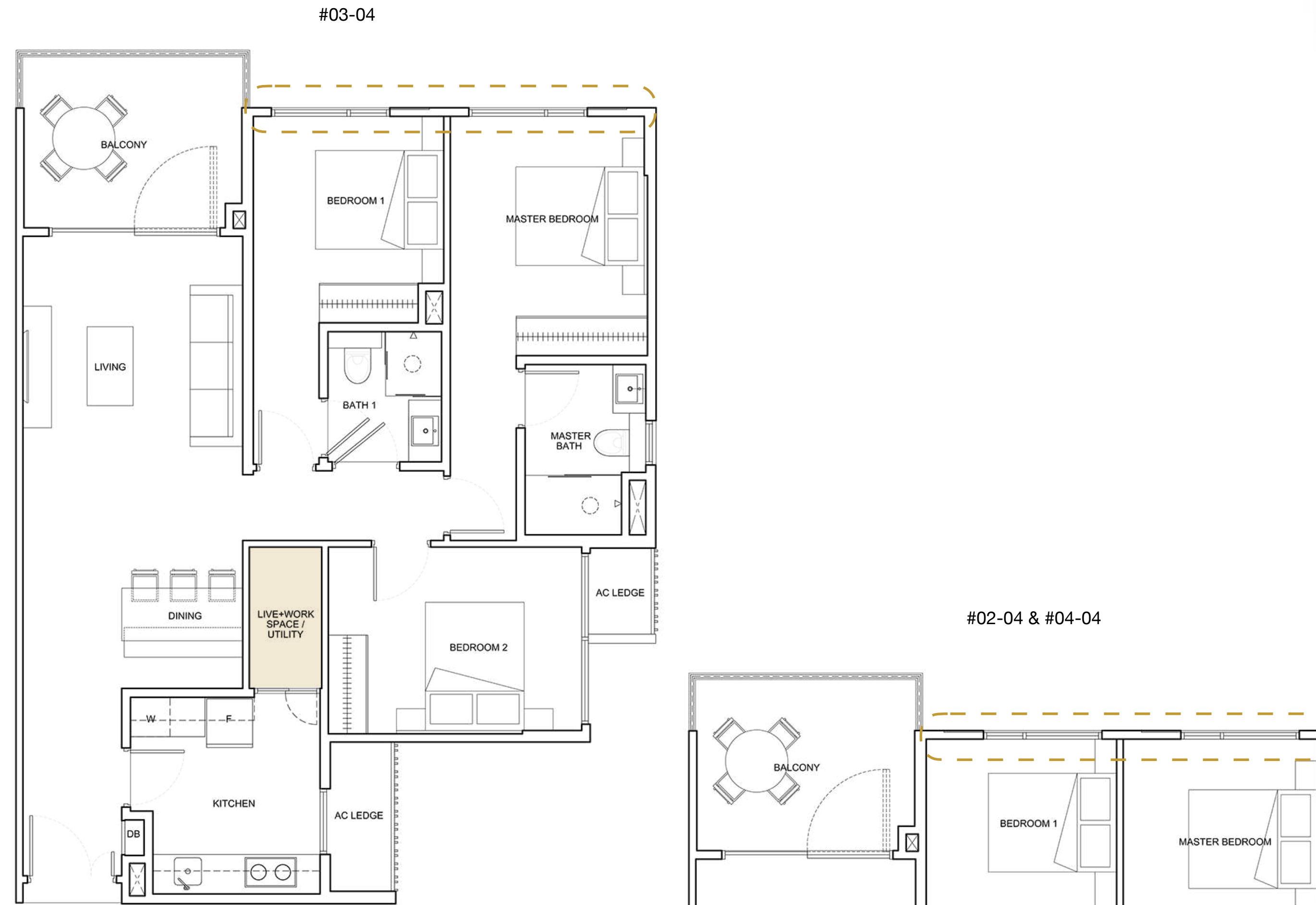


(Not to Scale)

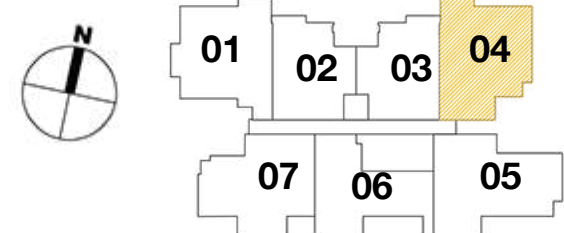
The plans are subject to amendments as may be required or approved by the relevant authorities. Floor areas are estimates only and subject to final survey. Plans are not drawn to scale and do not form part of the contract. The balcony shall not be enclosed unless with the approved balcony screen. The approved balcony screen will be installed at buyer's own cost should the buyer intend to have balcony enclosure.



Type B4
3 Bedroom + Utility
 107 sqm - #02-04, #03-04, #04-04

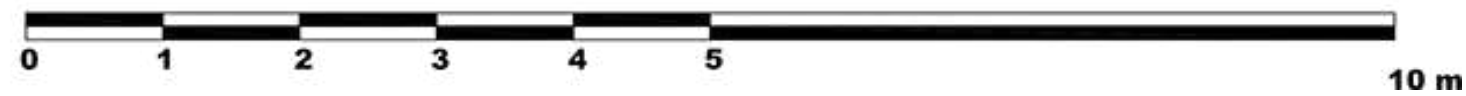
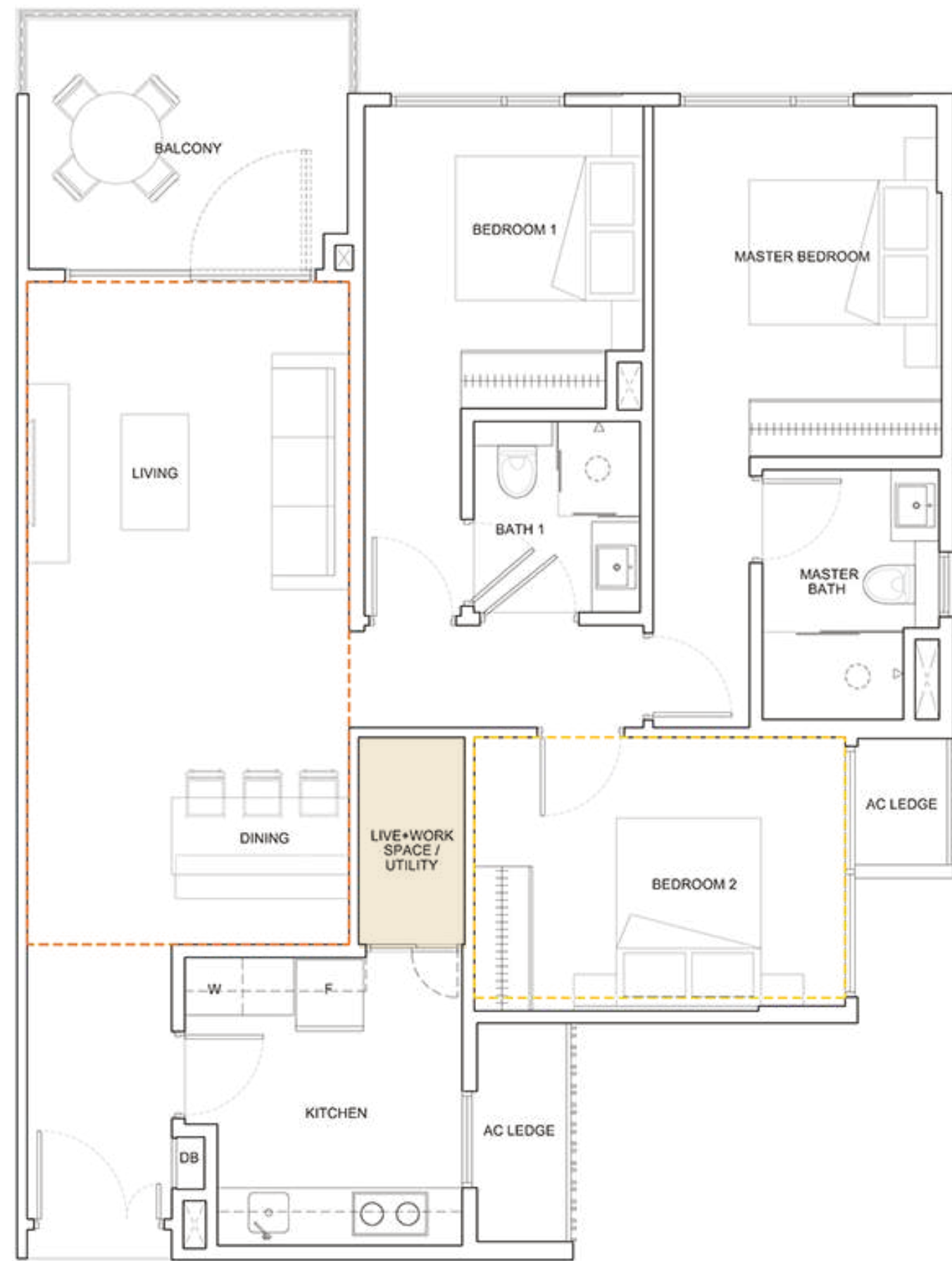


The plans are subject to amendments as may be required or approved by the relevant authorities. Floor areas are estimates only and subject to final survey. Plans are not drawn to scale and do not form part of the contract. The balcony shall not be enclosed unless with the approved balcony screen. The approved balcony screen will be installed at buyer's own cost should the buyer intend to have balcony enclosure.

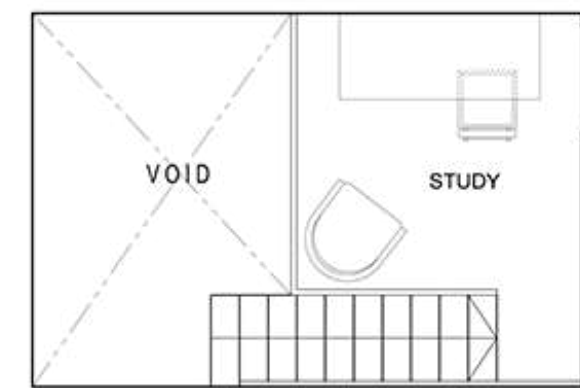


--- STRATA AREA IS INCLUSIVE OF STRATA VOID AREA ABOVE MASTER BEDROOM AS PER DASHED LINE

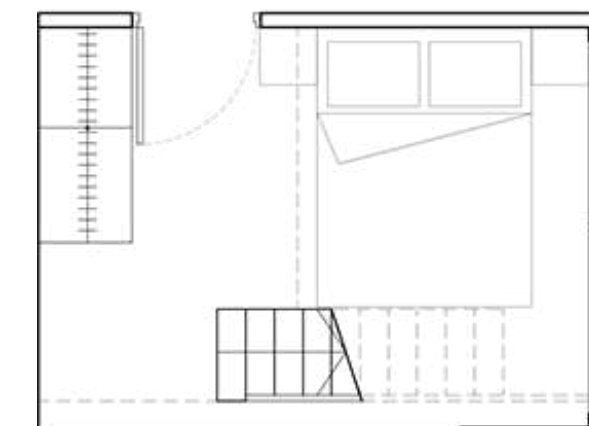
--- STRATA AREA IS INCLUSIVE OF STRATA VOID AREA ABOVE LIVING & DINING AREA AS PER DASHED LINE



SUGGESTED FURNITURE DECK AT LOFT



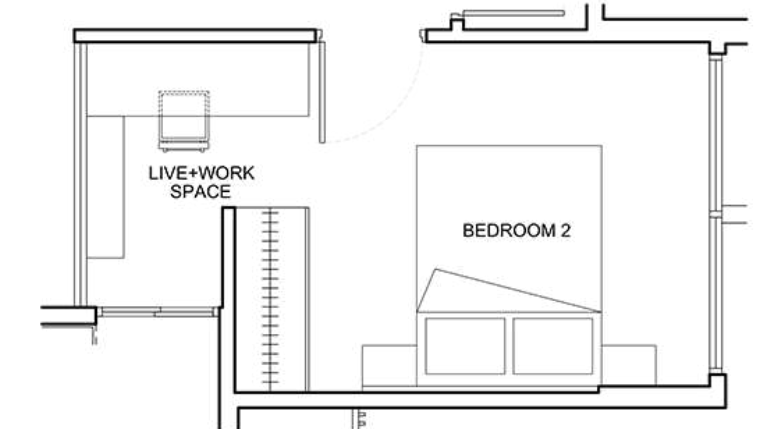
LOFT AT BEDROOM 2



Type B4-h
3 Bedroom + Utility
 143 sqm - #05-04

SUGGESTED **LIVE + WORK SPACE ID**

LIVE+WORK SPACE LAYOUT A

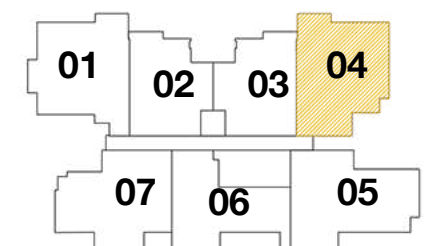


LIVE+WORK SPACE LAYOUT B



(Not to Scale)

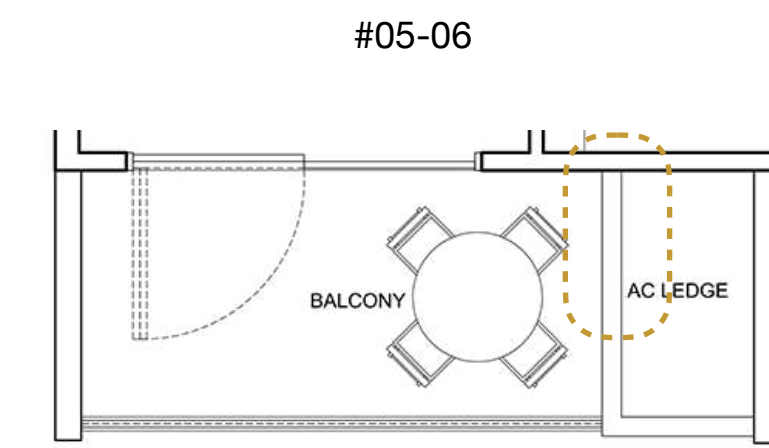
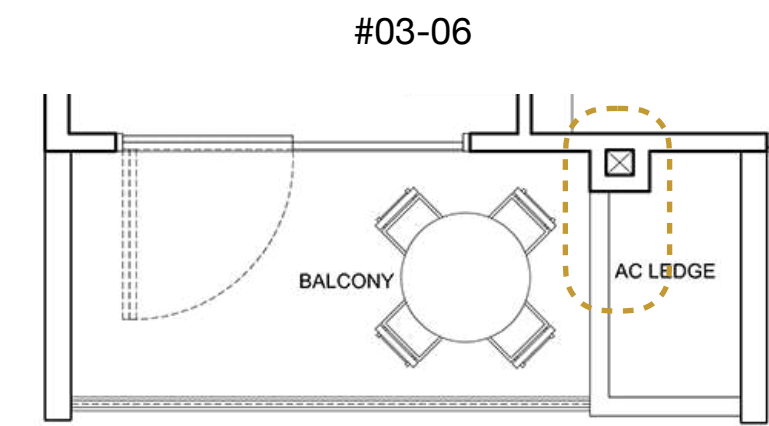
The plans are subject to amendments as may be required or approved by the relevant authorities. Floor areas are estimates only and subject to final survey. Plans are not drawn to scale and do not form part of the contract. The balcony shall not be enclosed unless with the approved balcony screen. The approved balcony screen will be installed at buyer's own cost should the buyer intend to have balcony enclosure.



Type B6

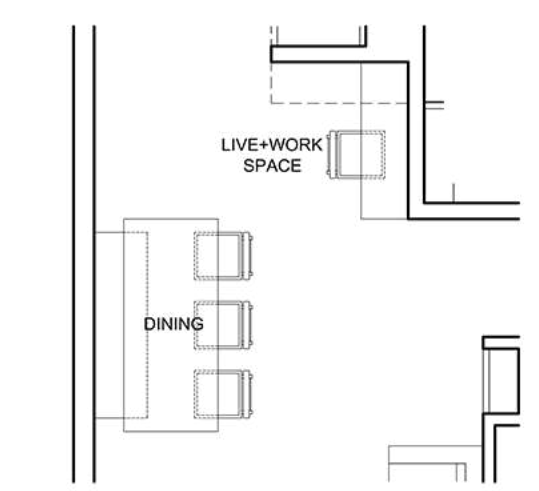
3 Bedroom

91 sqm - #02-06, #03-06,
#04-06, #05-06

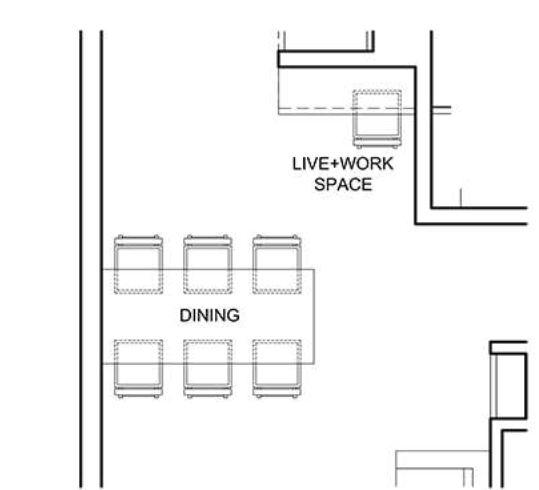


SUGGESTED LIVE + WORK SPACE ID

LIVE+WORK SPACE LAYOUT A

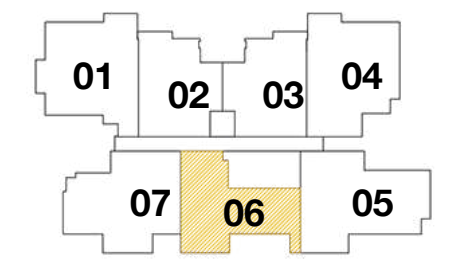


LIVE+WORK SPACE LAYOUT B

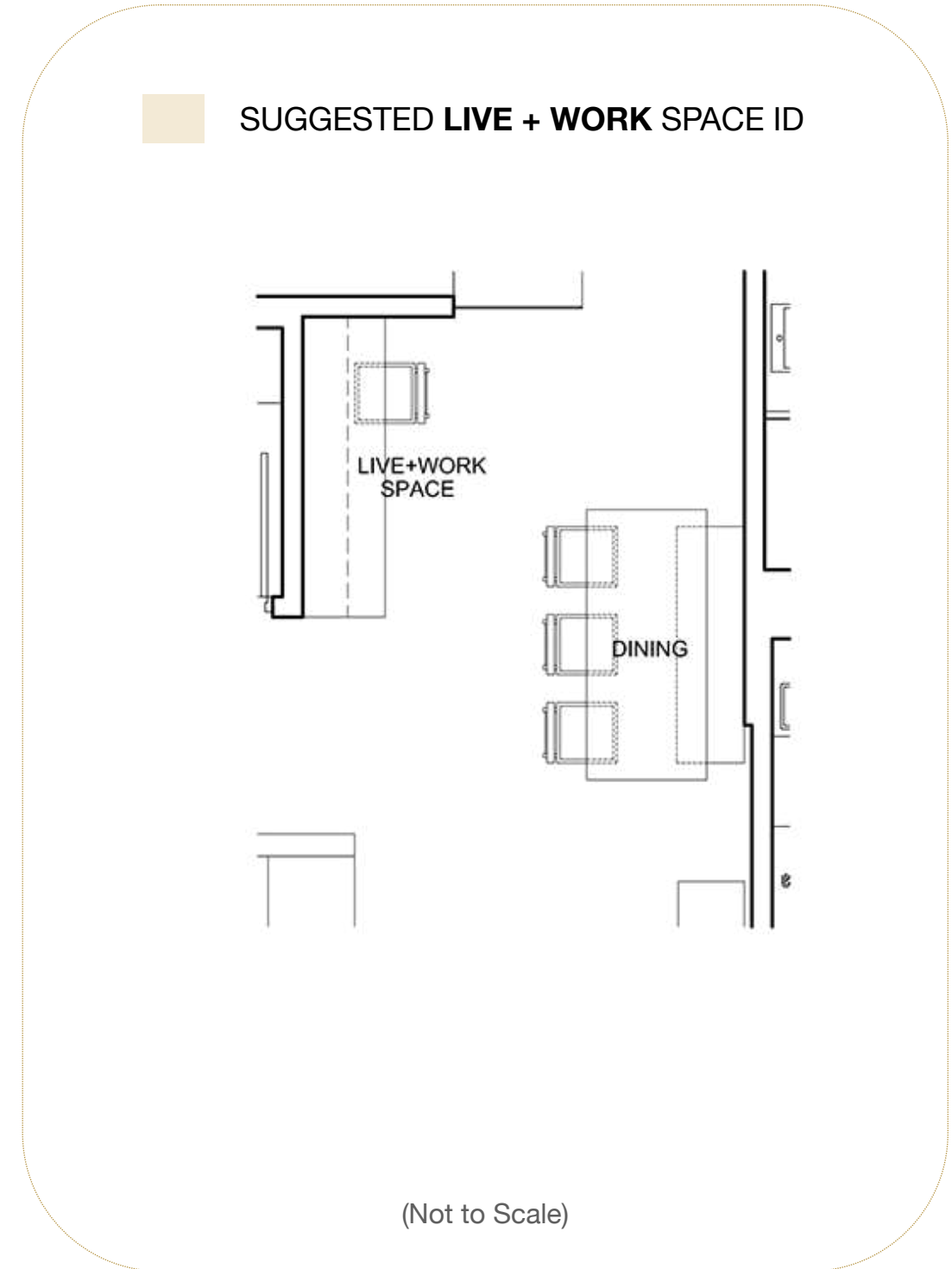
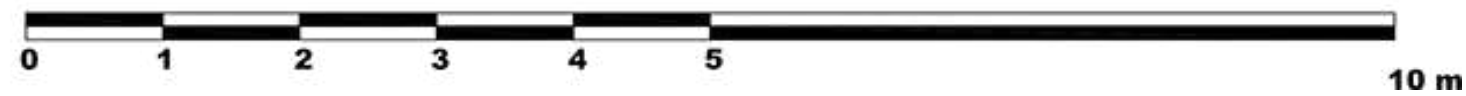


(Not to Scale)

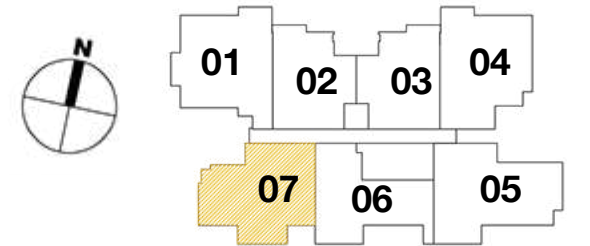
The plans are subject to amendments as may be required or approved by the relevant authorities. Floor areas are estimates only and subject to final survey. Plans are not drawn to scale and do not form part of the contract. The balcony shall not be enclosed unless with the approved balcony screen. The approved balcony screen will be installed at buyer's own cost should the buyer intend to have balcony enclosure.

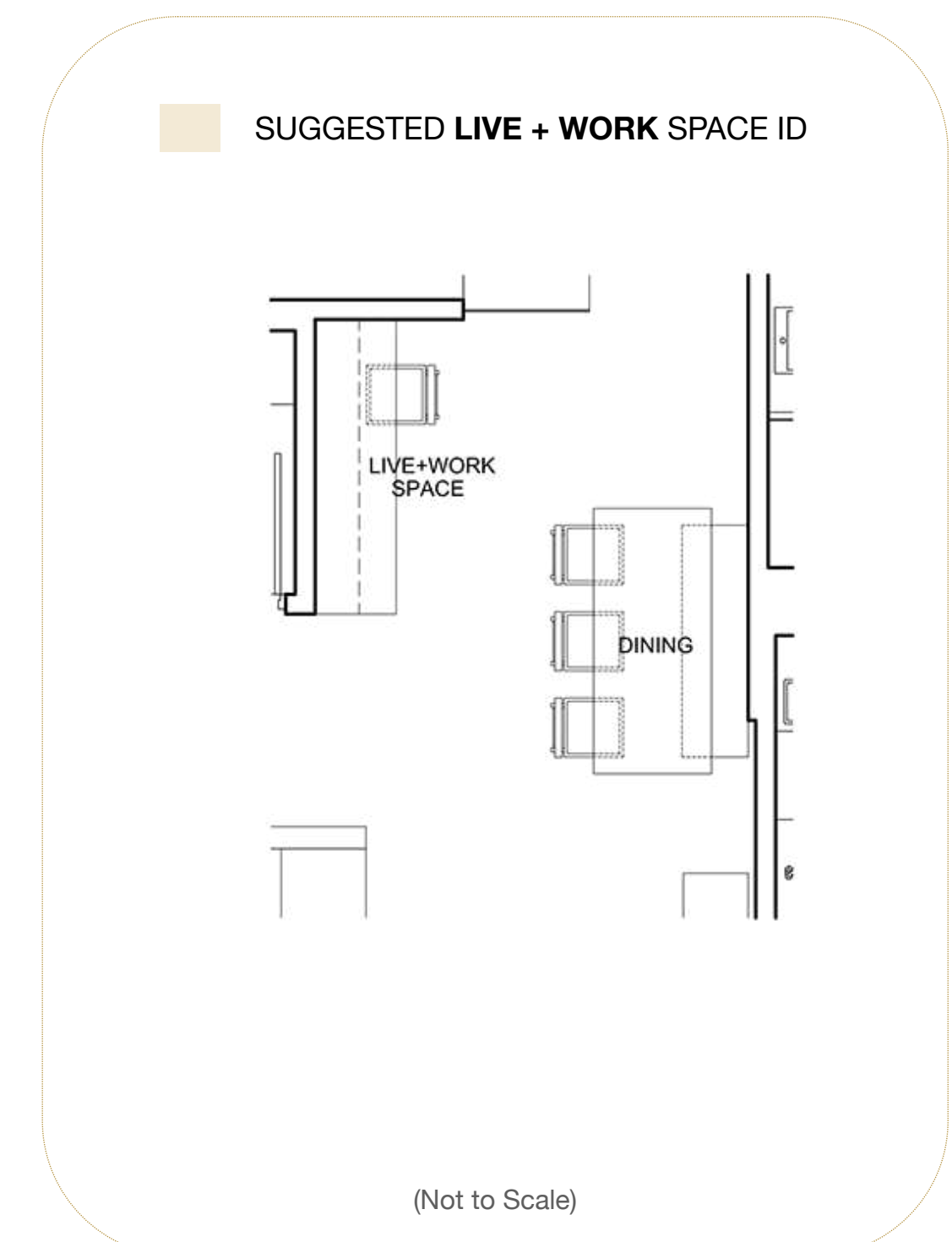
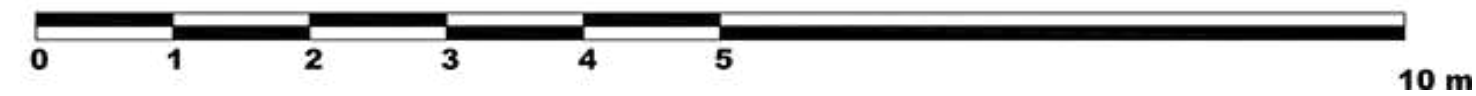


Type C7
3 Bedroom Dual Key
 104 sqm - #02-07, #04-07,

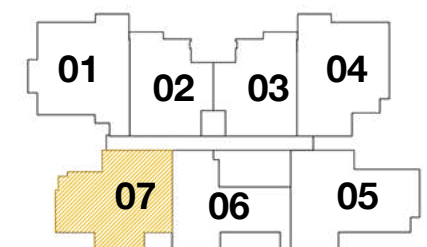


The plans are subject to amendments as may be required or approved by the relevant authorities. Floor areas are estimates only and subject to final survey. Plans are not drawn to scale and do not form part of the contract. The balcony shall not be enclosed unless with the approved balcony screen. The approved balcony screen will be installed at buyer's own cost should the buyer intend to have balcony enclosure.

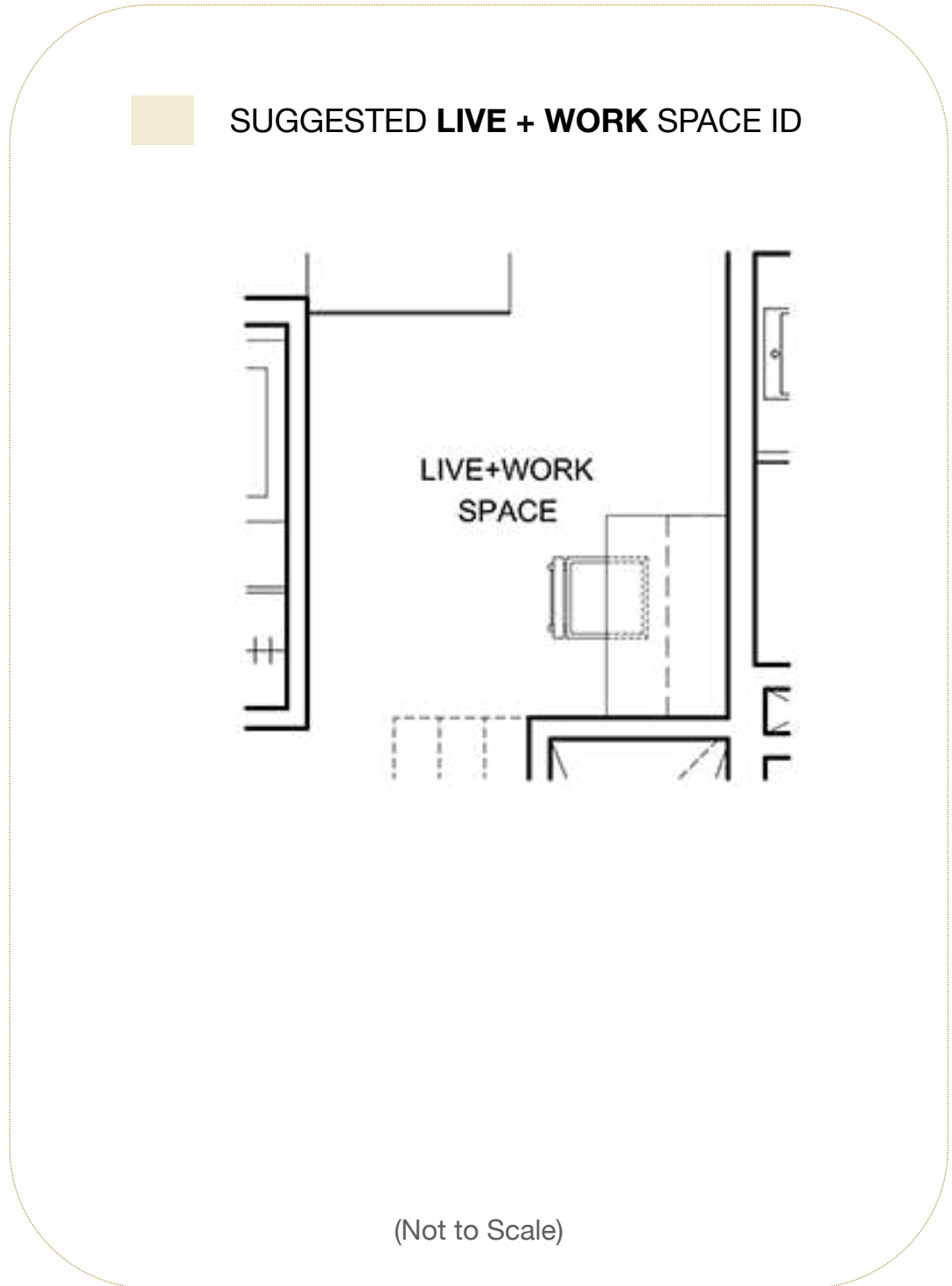
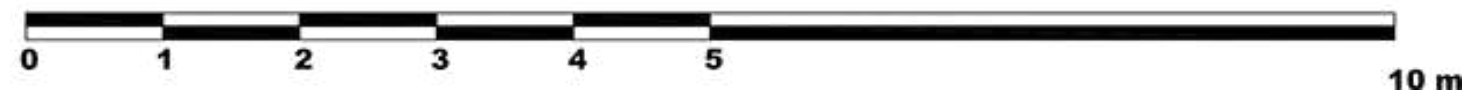
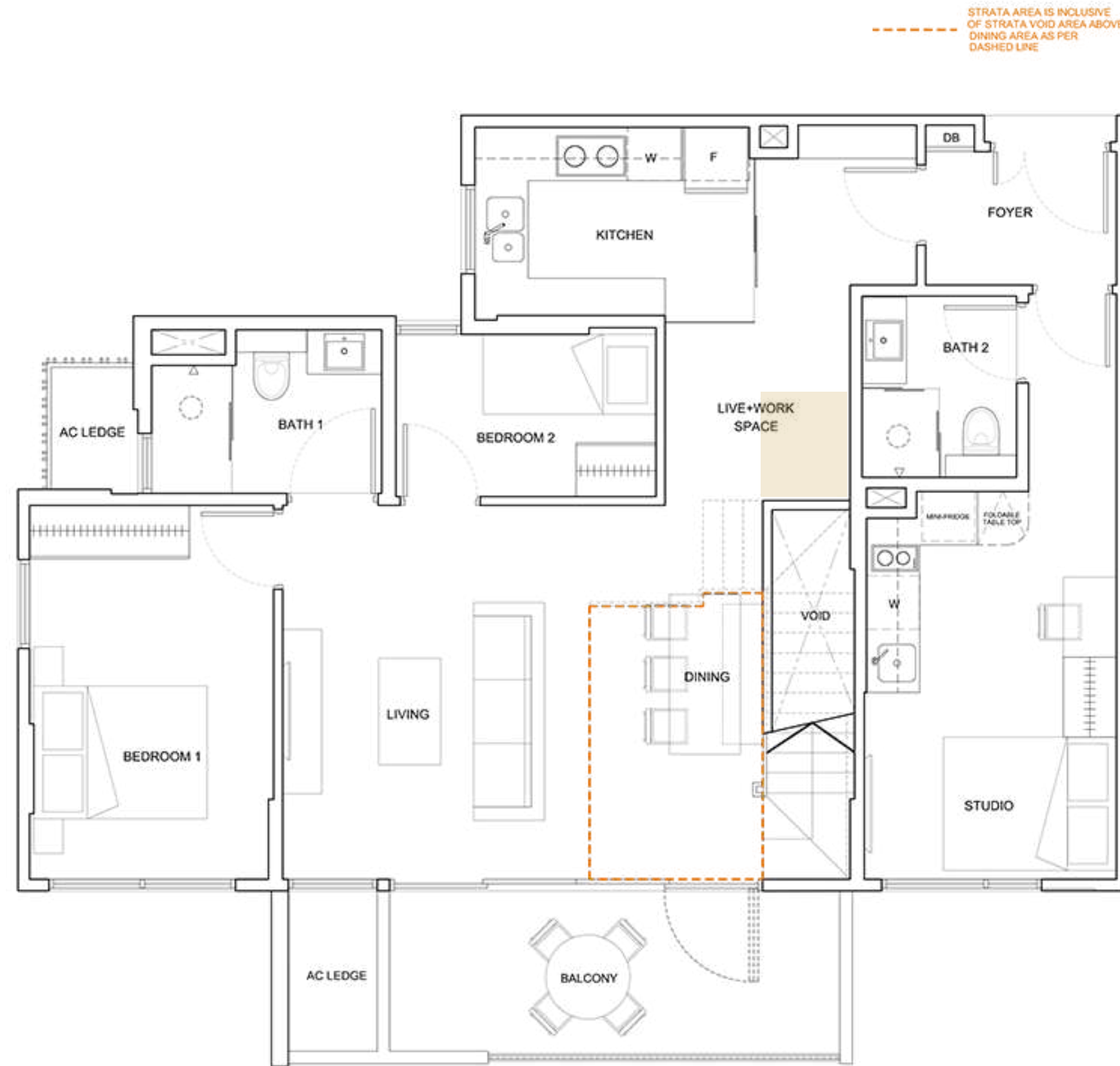




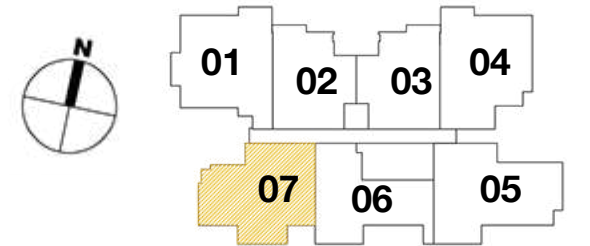
The plans are subject to amendments as may be required or approved by the relevant authorities. Floor areas are estimates only and subject to final survey. Plans are not drawn to scale and do not form part of the contract. The balcony shall not be enclosed unless with the approved balcony screen. The approved balcony screen will be installed at buyer's own cost should the buyer intend to have balcony enclosure.



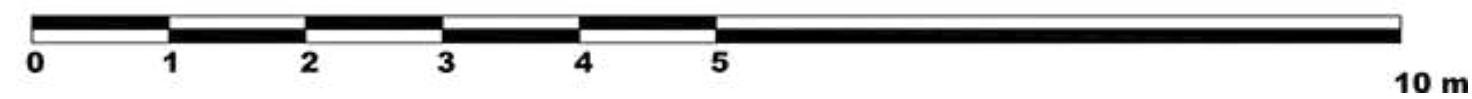
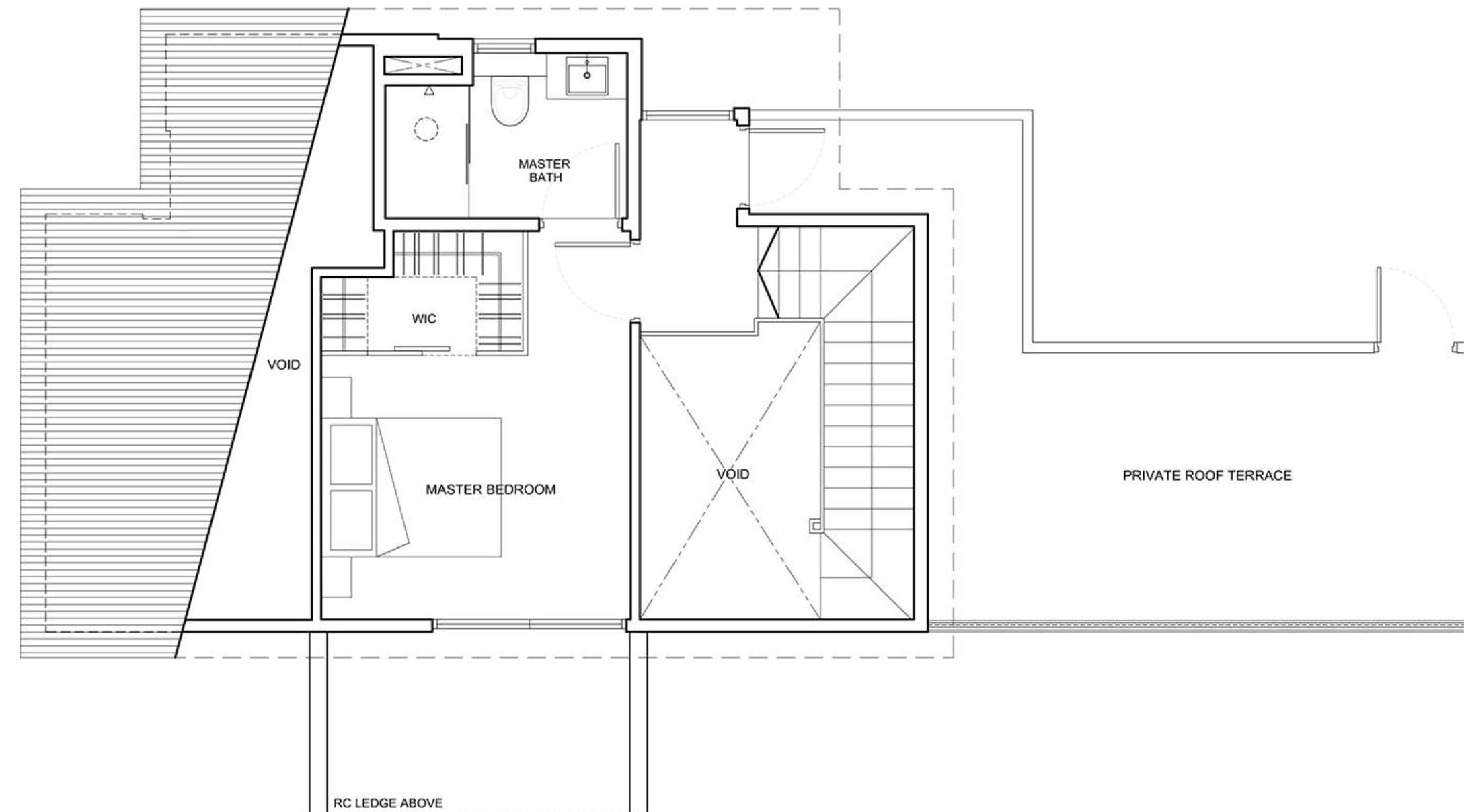
Level 1



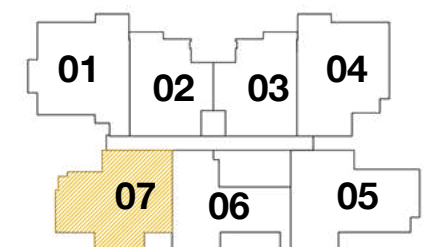
The plans are subject to amendments as may be required or approved by the relevant authorities. Floor areas are estimates only and subject to final survey. Plans are not drawn to scale and do not form part of the contract. The balcony shall not be enclosed unless with the approved balcony screen. The approved balcony screen will be installed at buyer's own cost should the buyer intend to have balcony enclosure.



Level 2

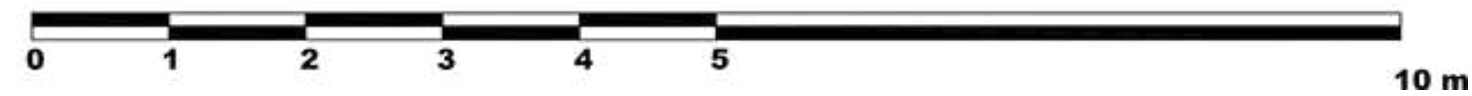
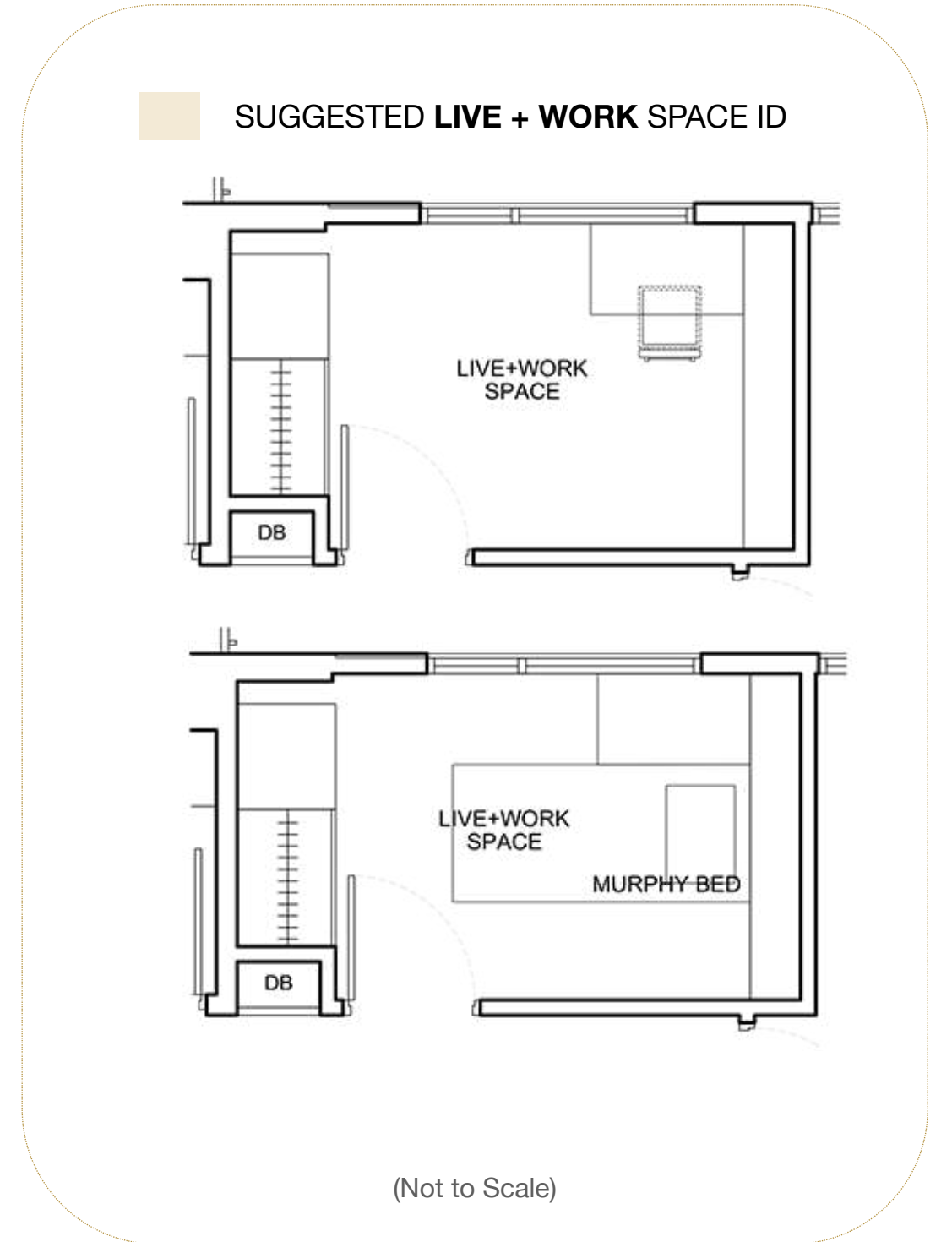
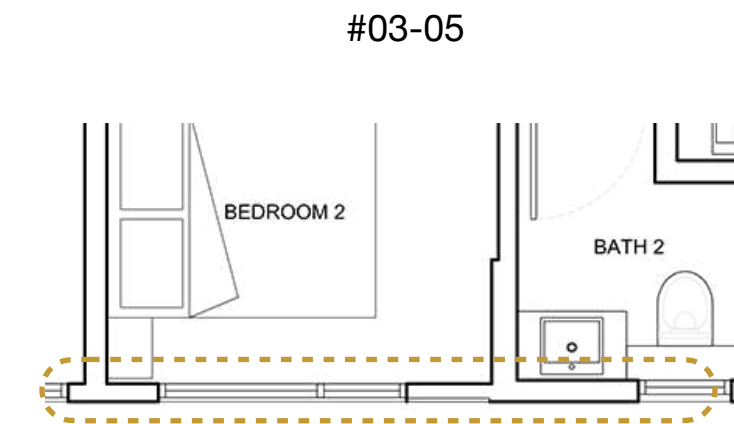
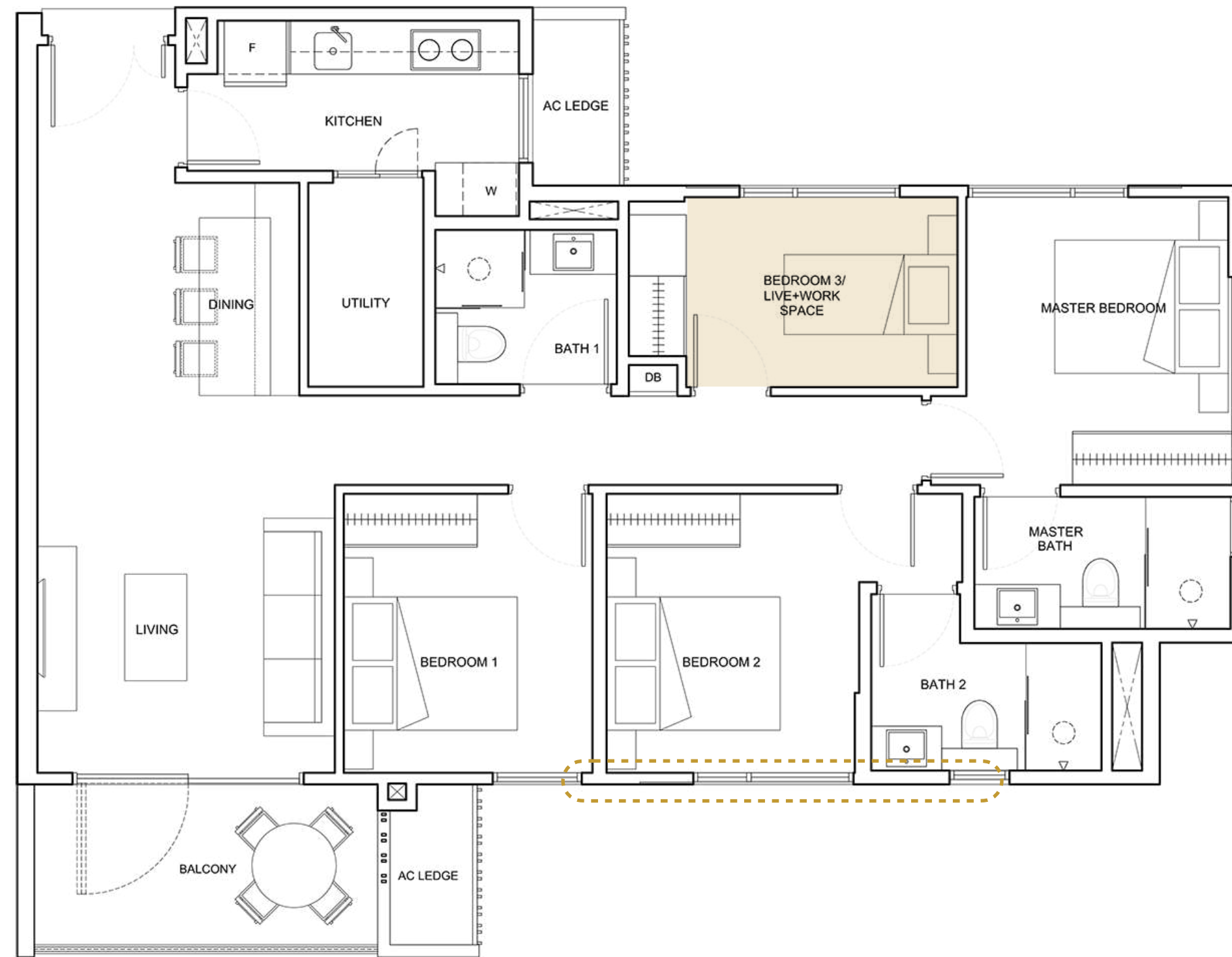


The plans are subject to amendments as may be required or approved by the relevant authorities. Floor areas are estimates only and subject to final survey. Plans are not drawn to scale and do not form part of the contract. The balcony shall not be enclosed unless with the approved balcony screen. The approved balcony screen will be installed at buyer's own cost should the buyer intend to have balcony enclosure.



Type D5
4 Bedroom + Utility
 110 sqm - #02-05, #03-05, #04-05

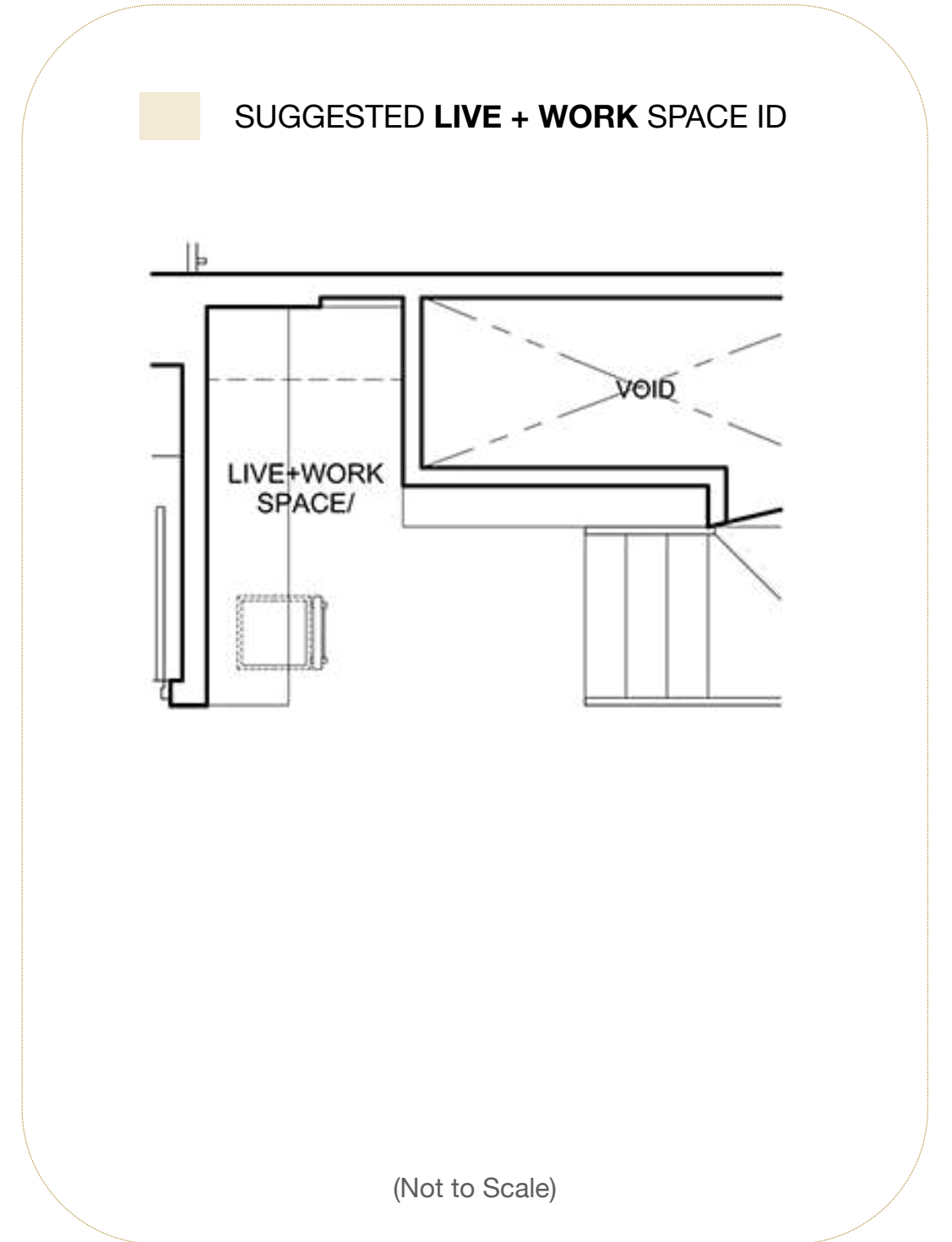
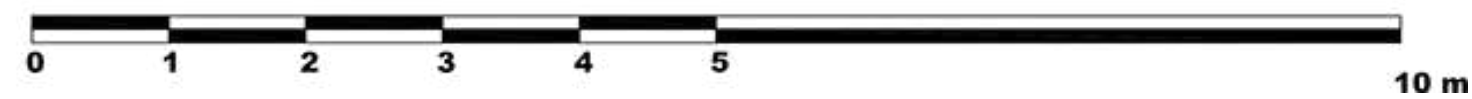
#02-05 & #04-05



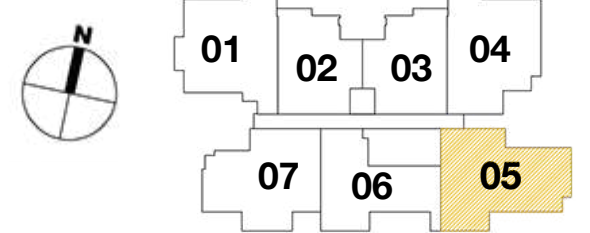
The plans are subject to amendments as may be required or approved by the relevant authorities. Floor areas are estimates only and subject to final survey. Plans are not drawn to scale and do not form part of the contract. The balcony shall not be enclosed unless with the approved balcony screen. The approved balcony screen will be installed at buyer's own cost should the buyer intend to have balcony enclosure.



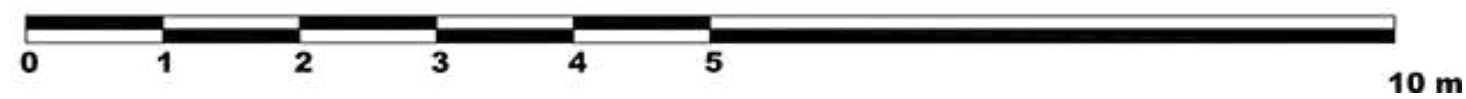
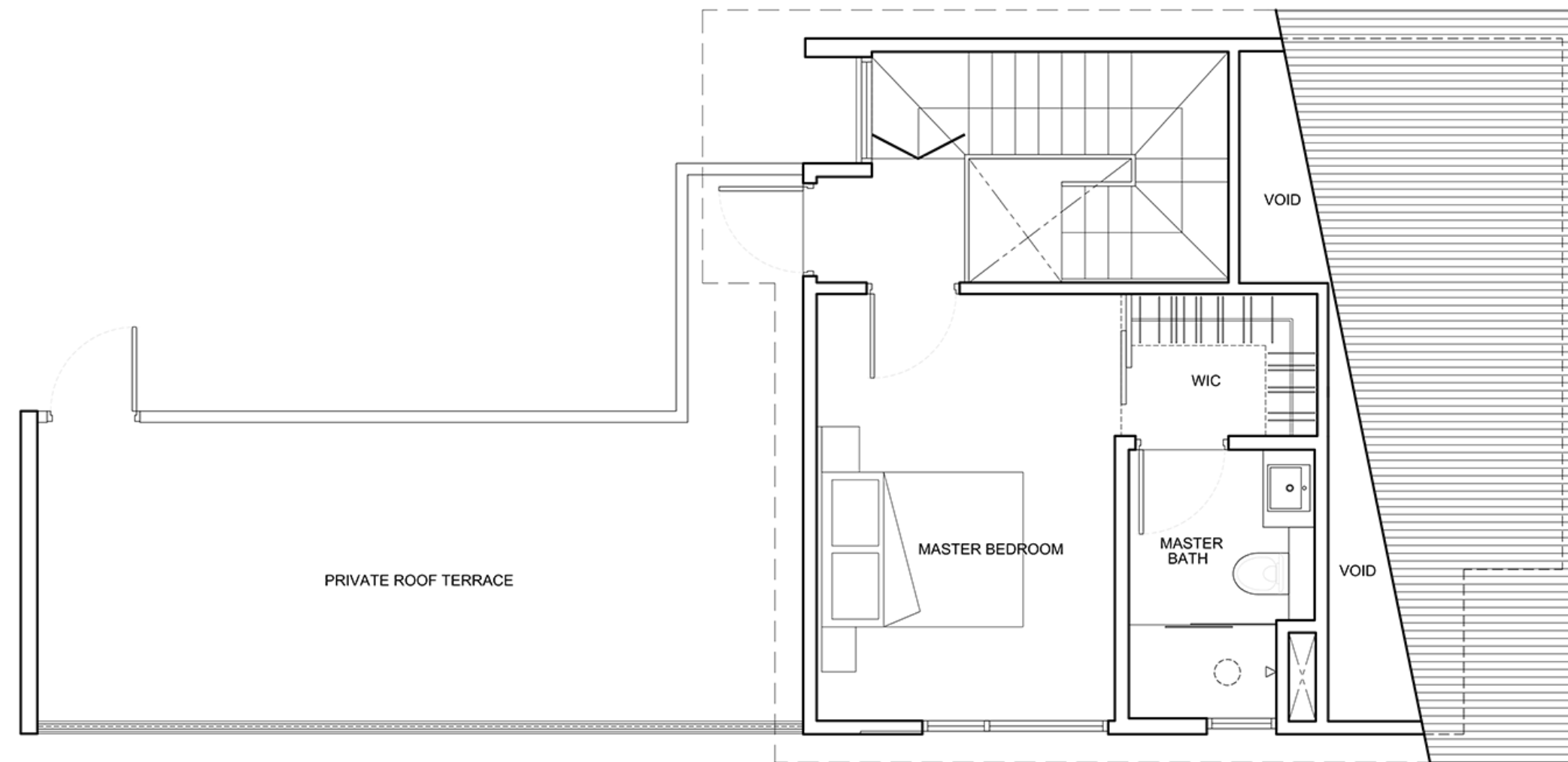
Level 1



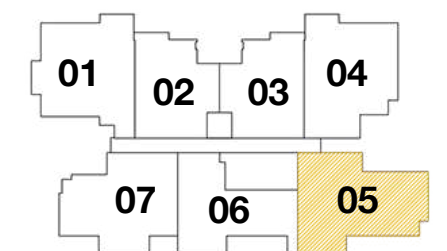
The plans are subject to amendments as may be required or approved by the relevant authorities. Floor areas are estimates only and subject to final survey. Plans are not drawn to scale and do not form part of the contract. The balcony shall not be enclosed unless with the approved balcony screen. The approved balcony screen will be installed at buyer's own cost should the buyer intend to have balcony enclosure.



Level 2



The plans are subject to amendments as may be required or approved by the relevant authorities. Floor areas are estimates only and subject to final survey. Plans are not drawn to scale and do not form part of the contract. The balcony shall not be enclosed unless with the approved balcony screen. The approved balcony screen will be installed at buyer's own cost should the buyer intend to have balcony enclosure.



A Limited Collection of
31 units in District 15.



Artist Impression

Rymden | 77

Limited Edition. Limitless Lifestyle.

Proudly Developed By



Since 1981, the Quek family has been actively growing a diverse business portfolio in Singapore's real estate and construction industry. Attaining a commendable A1 Financial Grade with no tender limit under the Singapore Building Construction Authority Registry System, coupled with its ISO 9001, 14001, and OHSAS 18001 certifications, Quek Hock Seng Construction Pte Ltd has successfully completed building contracts in both private and public sectors over the past 40 years.

Subsequently, Q Development was formed in recent years to focus on property development globally. The management team places strong emphasis on excellence as it continues to develop and reinforce core competencies and deep capabilities within strategic areas of the industry. Rymden 77 is a signature development stemming from these principles and the growth of the Quek family.

DEVELOPER

QHS Development Pte Ltd (UEN:201823093E)

DEVELOPER'S LICENSE NO.

C1335

TENURE OF LAND

Estate in Fee Simple (Freehold)

LOT & MUKIM NO.

95464V, 95459M, 95460L MK26

BP NO.

A2127-00310-2019-BP01 & BP02

EXPECTED DATE OF VACANT POSSESSION

22 December 2022

EXPECTED DATE OF LEGAL COMPLETION

22 December 2025

Whilst every reasonable care has been taken in preparing this brochure, the developer and its agents cannot be held responsible for any inaccuracies. All statements are believed to be correct but are not to be regarded as statements of representation of facts. All information and specifications are current at the time of going to press and are subjected to change as may be required and cannot form part of an offer or contract. All plans are subject to any amendments approved or may be approved by the relevant authority. All art renderings and illustrations contained in this brochure are artist's impressions only and photographs are only decor suggestions and none can be regarded as representation of fact. Areas are approximate measurements and subject to final survey.